

Stirlings

AUSTRALIA

Global Metals Distributor

STAINLESS & PERFORMANCE STEELS

BALUSTRADE FITTINGS HANDBOOK



STAINLESS STEEL - NICKEL ALLOYS - DUPLEX - COPPER NICKEL



QUOTE

Branches across Australia
including WA, QLD & TAS

CONTACT

www.stirlingsaustralia.com.au

SHOP

Purchase our products & services
online using online shop.

Round Tube & Fittings3

Round Tube3

Base Plate & Base Flange5

Tube Clamp8

Flush Joiner9

End Cap..... 12

Tube Bend & Tube Joint 13

Handrail Support..... 14

Bracket & Disc 17

Slotted Round Tube & Fittings 18

51 mm 18

38 mm..... 20

25 mm 22

Square Tube & Fittings 24

Square Tube..... 24

Cap, Cover & Base Flange 25

Flush Fit Fittings..... 26

Handrail Support..... 28

Slotted Square Tube..... 28

Rectangular & Oval Tube..... 29

Slotted Rectangular Tube & Fittings 30

50 x 25 mm 30

25 x 21 mm 32

Flat Tube & Fittings..... 34

Balustrade Wire..... 36

Wire & Fittings 36

Easyloc Fittings 39

Glass Products 41

Glass Clamp 41

Spigot 42

Glass Support..... 43

Marine Hardware 44

Fasteners..... 51

Cleaning & Polishing Products..... 53

Adhesives & Metalworking Fluids 55

Round Tube 304

ASTM A554: Unpolished, #320 Grit, #600 Grit, #1000 Grit (Mirror, HiPol)

ASTM A269: Unpolished annealed, #600 Grit annealed

ASTM A789: 2205 Unpolished annealed,

ASTM A249: available from production, AS 1528: #320 Grit, internally smooth

Length: 6 mtrs or 6.1 mtrs (2205)

Note: Other finishes available on request. Alternative specification A249 (welded heat exchanger tube)



Size		304	304	304	304	304	304	Apprx. Wgt. (kg/m)
W.T.	O.D.	Unpolished	#320 Grit	#320 Grit Ann	#320 Grit AS1528	#600 Grit	Mirror Finish	
		-	TR304+HT	TR304+HTA	TR304+HB	TR304+HS	TR304+HP	
1.2	9.52	○	○	○	○	○	○	0.25
	12.70	○	○	○	○	●	○	0.34
	15.88	○	○	○	○	●	○	0.44
	19.05	○	○	○	○	●	○	0.53
	22.22	○	○	○	○	●	○	0.63
	25.40	○	○	●	○	●	○	0.73
	31.75	○	○	○	○	●	○	0.92
	38.10	○	○	○	○	○	○	1.11
1.5	50.80	○	○	○	○	○	○	1.49
	15.90	○	○	○	○	○	○	0.57
	19.05	○	○	○	○	○	○	0.70
1.6	9.52	○	○	○	○	○	○	0.31
	12.70	○	○	○	○	●	○	0.44
	15.88	○	○	○	○	●	○	0.57
	19.05	○	○	○	○	●	●	0.70
	22.22	○	○	○	○	●	●	0.83
	25.40	○	○	○	●	●	●	0.95
	28.58	○	○	○	○	●	○	1.08
	31.75	○	○	○	●	●	●	1.21
	35.00	○	○	○	○	●	○	1.34
	38.10	○	●	●	●	●	●	1.46
	41.28	○	○	○	○	●	○	1.59
	44.45	○	○	○	○	●	○	1.71
	50.80	○	●	●	●	●	●	1.98
	54.00	○	○	○	○	●	○	2.03
	57.00	○	○	○	○	●	○	2.22
	60.00	○	○	○	○	●	○	2.35
	63.50	○	○	○	●	●	●	2.49
	70.00	○	○	○	○	●	○	2.68
	76.20	○	○	○	●	●	●	3.00
	88.90	○	○	○	○	●	○	3.50
	101.6	○	○	○	●	●	○	4.02
	114.3	○	○	○	○	○	○	4.45
	127.0	○	○	○	●	○	○	5.03
	152.4	○	○	○	●	○	○	6.05



Unpolished



#320 Grit



AS1528 #320 Grit
internally smooth



#600 Grit



#1000 Grit
Mirror Finish
HiPol

Stocked Item ○ Market Available

Round Tube 316 & 2205

ASTM A554: Unpolished, #320 Grit, #600 Grit, #1000 Grit

ASTM A269: Unpolished annealed, #600 Grit annealed

ASTM A789: 2205 Unpolished annealed,

ASTM A249: available from production, AS 1528: #320 Grit, internally smooth

Length: 6 mtrs or 6.1 mtrs (2205)

Note: Other finishes available on request. Alternative specification A249 (welded heat exchanger tube)

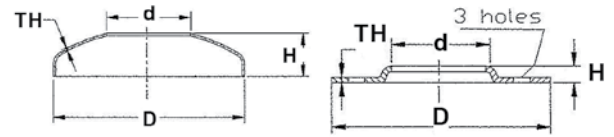


Size		316 Unpolished	316 Unpolished Ann	316 #320 Grit	316 #320 Grit AS1528	316 #600 Grit	316 Mirror Finish*	2205 Unpolished Ann	Apprx. Wgt. (kg/m)
W.T.	O.D.	TR316+HM	TR316+HMA	TR316+HT	TR316+HB	TR316+HS	TR316+HP	TR2205+A	
1.2	9.52	○	○	○	○	○	○	○	0.25
	12.70	○	○	○	○	○	○	○	0.34
	15.88	○	○	○	○	○	○	○	0.44
	19.05	○	○	○	○	●	○	○	0.53
	22.22	○	○	○	○	○	○	○	0.63
	25.40	○	○	○	○	○	○	○	0.73
	38.10	○	○	○	○	○	○	○	1.11
1.5	12.70	○	○	●	○	○	○	○	0.45
	15.90	○	○	●	○	○	●	○	0.57
	19.05	○	○	●	○	○	○	○	0.70
1.6	9.52	○	○	○	○	○	○	○	0.31
	12.70	○	○	○	○	●	○	○	0.44
	15.88	○	○	○	○	●	○	○	0.57
	19.05	○	○	○	○	●	●	●	0.70
	22.22	○	○	○	○	●	●	○	0.83
	25.40	○	●	○	●	●	●	●	0.95
	31.75	○	○	○	●	●	●	○	1.21
	38.10	○	●	●	●	●	●	●	1.46
	44.45	○	○	○	○	●	○	○	1.71
	50.80	○	●	●	●	●	●	●	1.98
	57.00	○	○	○	○	○	○	○	2.22
	63.50	○	●	●	●	●	●	○	2.49
	76.20	●	○	○	●	●	●	○	3.00
	88.90	○	○	○	○	●	○	○	3.50
	101.6	●	○	○	●	●	○	○	4.02
2.0	127.0	○	○	●	●	○	○	○	5.03
	152.4	○	○	●	●	○	○	○	6.05
	50.8	●	○	○	○	○	○	○	2.82
	63.5	○	○	○	○	○	○	●	3.08
	76.20	○	●	○	○	○	○	●	3.70
	101.6	○	●	○	○	○	○	●	5.00
	203.0	○	○	●	○	○	○	○	10.00
3.0	254.0	●	○	○	○	○	○	○	13.00
	50.8	○	○	●	○	●	○	○	3.65

* Includes HiPol and polishes #800 grit and higher.

Stocked Item ○ Market Available

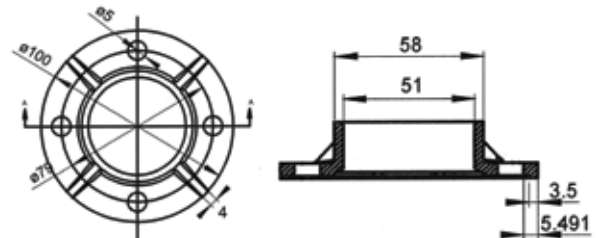
Base Plate & Cover Set



* Indent Only

Base (Grade 304)						Cover (Grade 316)			
	Size	D mm	d mm	H mm	TH mm	D mm	d mm	H mm	TH mm
Satin									
FTBBPCS316013	1/2"	65	13	6	2	67	13	15	1
FTBBPCS316019I *	3/4"	65	19	5.5	2	67	19	15	1
FTBBPCS316025	1"	65	25	5.5	2	67	25	15	1
FTBBPCS316032	1.1/4"	80	32	6.5	2	82	32	17	1
FTBBPCS316038	1.1/2"	80	38	6	2	82	38	17	1
FTBBPCS316051	2"	100	51	8	3	102	51	25	1
FTBBPCS316063	2.1/2"	115	63.5	8	3	117	63.5	28	1
FTBBPCS316076I *	3"	115	76	6	6	117	76	27	1
Mirror									
FTBBPCS316038M	1.1/2"	80	38	6	2	82	38	17	1
FTBBPCS316051M	2"	100	51	8	3	102	51	25	1

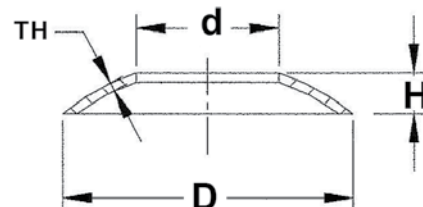
Heavy Duty Base Plate & Cover



Item No.	Type	Grade	
FTBBP406100	Base	304	100mm OD c/w 4 x 10mm Bolt Holes
FTBBPC316102	Cover	316	102mm OD x 51mm ID Mirror

Round Tube Cover

316

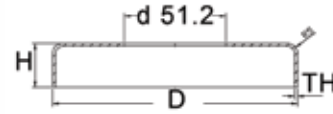
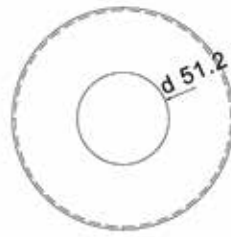


Item No.	Size	D	d	H	TH
Satin					
FTBRTCOV316038	3-1.1/2"	79 mm	38 mm	7 mm	1.5 mm
FTBRTCOV316050	4"-2"	101 mm	52 mm	9 mm	1.5 mm
Mirror					
FTBRTCOV316050M	4"-2"	101 mm	52 mm	9 mm	1.5 mm

Round Tube Cover Plate 51mm

316

Mirror

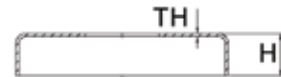
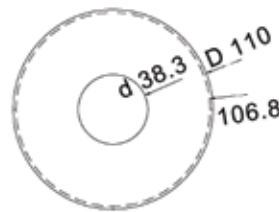


Item No.	Size	D	d	H	TH
FTBRCP316051	2"	123.5 mm	51.2 mm	22 mm	1.5 mm

Round Tube Cover Plate 38mm

316

Mirror

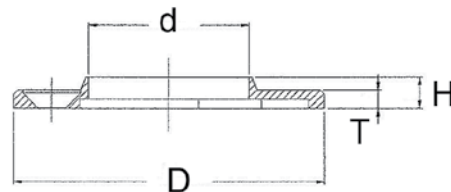


Item No.	Size	D	d	H	TH
FTBRCP316038	1.5"	110 mm	38.3 mm	21.8 mm	1.6 mm

Base/Flange

316

Mirror

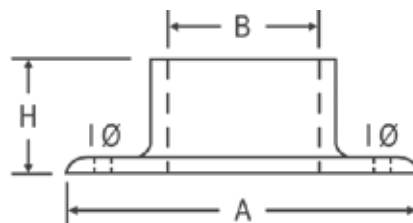


Item No.	Size	D	d	H	T
FTBHPP316051	2"(51mm)	99 mm	51.8 mm	10 mm	7 mm

Wall and Floor Flange 25 & 51 mm

316

Mirror

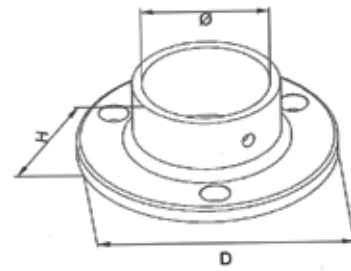


Item No.	B	A	Screw Hole I	H
FTBRBF03H316025	25.4 mm	70 mm	5 mm	25 mm
FTBWFF316051	50.8 mm	89 mm	6.2 mm	28 mm

Wall and Floor Flange 38 mm

316

Mirror

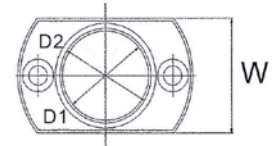
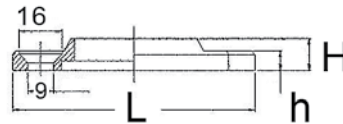


Item No.	Size	OD	H
FTBWFF316038	38.1 mm	76 mm	25 mm

Long Base/Flange (Cast)

316

Satin

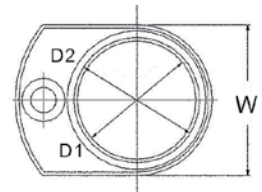
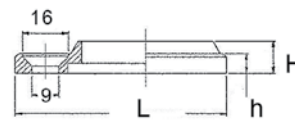


Item No.	Size	D1	D2	W	L	H	h
FTBLBP316051	51 mm	54 mm	51 mm	64 mm	103 mm	13 mm	8 mm

Short Base/Flange (Cast)

316

Satin

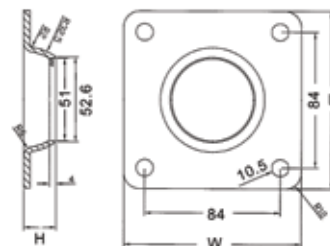


Item No.	Size	D1	D2	W	L	H	h
FTBSBP316051	51 mm	54 mm	51 mm	64 mm	84 mm	13 mm	8 mm

Square Base/Flange 51mm

316

Mirror

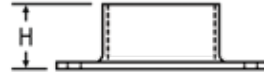
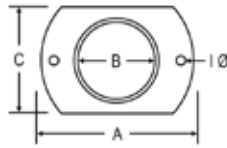


Item No.	Size	W	L	H
FTBSBPH316051	51 mm	110 mm	110 mm	20 mm

Oblong Base/Flange

316

Mirror



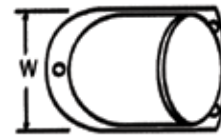
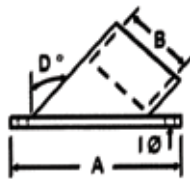
Round Tube ID, Round 2 Hole, Heavy duty cast "2" hole slab base. Suitable for fixing handrails in between timber, masonry or steel posts. May also be used for floor mounting where space is limited

Item No.	Tube Ø	A	B	C	I	H	Weight
FTBRBPF316025	1"	65 mm	25.4 mm	45 mm	5.0 mm	25 mm	94g
FTBRBPF316038	1.5"	75 mm	38.1 mm	56 mm	5.0 mm	25 mm	140g
FTBRBPF316051	2"	100 mm	50.8 mm	69 mm	6.5 mm	31 mm	255g

Wall Stop Base/Flange

316

Mirror



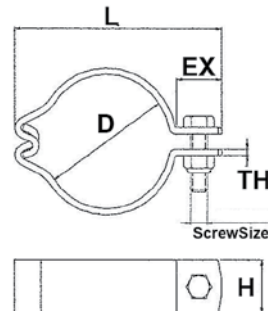
Wall Stop Flange 37 Deg 51mm, "3" hole cast angled flange. Suitable for fixing handrails down stairways between timber, masonry or steel posts. Flange can be turned 180 degree to complete the stairway handrail.

Item No.	Tube Ø	D	A	B	W	I	Weight
FTBWSF316051	2"	53°	150 mm	50.8 mm	70 mm	6.0 mm	260g

Tube Clamp

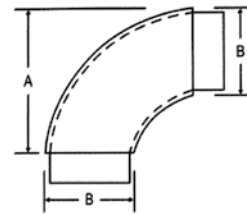
304

Satin



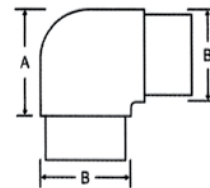
* Indent Only

Item No.	Size	D	L	EX	H	TH	Screw
		mm	mm	mm	mm	mm	
HFCLAMPIP304012I *	1/2" 12mm	13	42	16	25	2	M6x25
HFCLAMPIP304019	3/4" 19mm	19	48	16	25	2	M6x25
HFCLAMPIP304025	1" 25mm	25	64	22	25	3	M8x30
HFCLAMPIP304031	1.1/4" 31.8mm	32	69	22	25	3	M8x30
HFCLAMPIP304038	1.1/2" 38mm	38	74	22	25	3	M8x30
HFCLAMPIP304050	2" 51mm	51	90	24	25	3	M8x30
HFCLAMPIP304065	2.1/2" 63mm	63	102	22	25	3	M8x30
HFCLAMPIP304076	3" 76mm	76	114	22	25	3	M8x30
HFCLAMPIP304100	4" 101mm	101	138	22	25	3	M8x30

Flush Joiner 90 ° Bend Radiused
316
Mirror


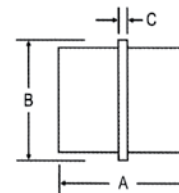
* Indent Only

Item No.	Tube Ø	Wall	A	B (Tube Ø)	Weight
FTBFJR316B9038I *	1.5"	1.5 mm	66 mm	38.1 mm	271g
FTBFJR316B9051	2"	1.5 mm	124 mm	50.8 mm	395g

Flush Joiner 90 ° Inline Joiner
316
Mirror


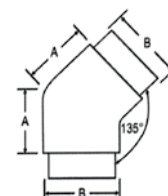
* Indent Only

Item No.	Tube Ø	Wall	A	B (Tube Ø)	Weight
FTBFJ316B9025	1"	1.5	38	25.4	102g
FTBFJ316B9038	1.5"	1.5	51	38.1	230g
FTBFJ316B9050	2"	1.5	57	50.8	340g
FTBFJ316B93050I *	2"	3.0	57	50.8	680g

Flush Joiner Inline Joiner
316
Mirror


* Indent Only

Item No.	Tube Ø	Wall	A	B (Tube Ø)	C	Weight
FTBFJ316TJ025	1"	1.5 mm	38 mm	25.4 mm	3.0 mm	45g
FTBFJ316TJ038	1.5"	1.5 mm	51 mm	38.1 mm	3.0 mm	112g
FTBFJ316TJ050	2"	1.5 mm	54 mm	50.8 mm	3.0 mm	120g
FTBFJ316TJ3050I *	2"	3.0 mm	54 mm	50.8 mm	3.0 mm	240g

Flush Joiner 135 ° Inline Joiner
316
Mirror


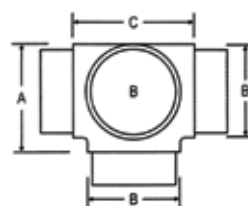
* Indent Only

Item No.	Tube Ø	Wall	A	B (Tube Ø)	Weight
FTBFJ316B13525	1"	1.5 mm	22 mm	25.4 mm	82g
FTBFJ316B13538	1.5"	1.5 mm	41 mm	38.1 mm	274g
FTBFJ316B13550	2"	1.5 mm	45 mm	50.8 mm	418g
FTBFJ316B43050I *	2"	3.0 mm	45 mm	50.8 mm	570g

Flush Joiner 4-Way Tee

316

Mirror



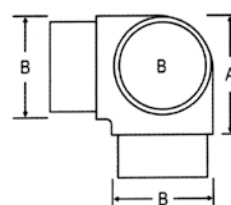
* Indent Only

Item No.	Tube Ø	Wall	A	B Ø	C	Weight
FTBFJ3164WT038I *	1.5"	1.5 mm	51 mm	38.1 mm	60 mm	300g
FTBFJ3164WT051	2"	1.5 mm	57 mm	50.8 mm	67 mm	560g

Flush Joiner 90 ° Tee

316

Mirror



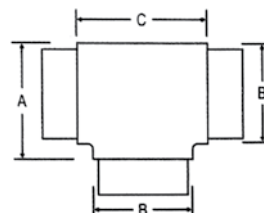
* Indent Only

Item No.	Tube Ø	Wall	A	B (Tube Ø)	Weight
FTBFJ316T9025I *	1"	1.5 mm	32 mm	25.4 mm	125g
FTBFJ316T9038I *	1.5"	1.5 mm	51 mm	38.1 mm	275g
FTBFJ316T9050	2"	1.5 mm	57 mm	50.8 mm	435g

Flush Joiner Equal Tee

316

Mirror



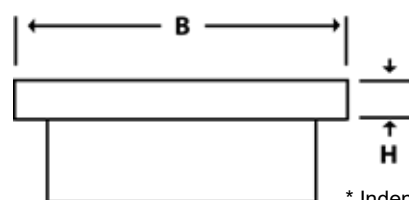
* Indent Only

Item No.	Tube Ø	Wall	A	B (Tube Ø)	C	Weight
FTBFJ316ET038	1.5"	1.5 mm	51 mm	38.1 mm	60 mm	290g
FTBFJ316ET050	2"	1.5 mm	57 mm	50.8 mm	67 mm	450g
FTBFJ316ET3050I *	2"	3.0 mm	57 mm	50.8 mm	67 mm	900g

Flush Joiner Push Fit Flat End Cap

316

Mirror



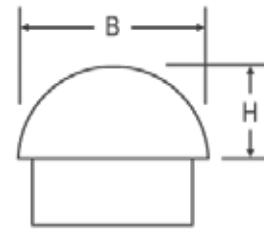
* Indent Only

Item No.	Tube Ø	Wall	B	H	Weight
FTBFJ316EC025	1"	1.5 mm	25.4 mm	1.8 mm	20g
FTBFJ316EC038I *	1.5"	1.5 mm	38.1 mm	3.5 mm	50g
FTBFJ316EC050	2"	1.5 mm	50.8 mm	4.0 mm	85g

Flush Joiner Dome Push Fit End Cap

316

Mirror

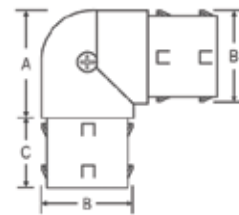


Item No.	Tube Ø	Wall	B	H	Weight
FTBDFC316038	1.5"	1.5 mm	38.1 mm	19 mm	78g
FTBDFC316051	2"	1.5 mm	50.8 mm	25 mm	160g

Flush Joiner Adjustable Bend

316

Mirror

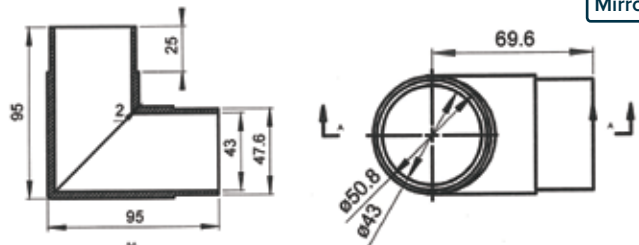


Item No.	Tube Ø B	Wall	A	C	Weight
FTBFJ316A038	38mm	1.5 mm	41 mm	29 mm	255g
FTBFJ316A051	51mm	1.5 mm	57 mm	38 mm	485g

Flush Fit Joiner 90 ° Mitre Bend

316

Mirror

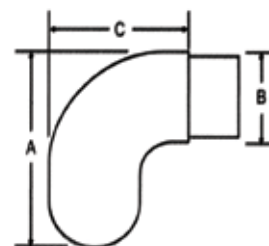


Item No.	Tube Ø	Wall
FTBMDC9316038	1.5"	1.5 mm
FTBMDC9316051	2"	1.5 mm

Handrail End 90 °

316

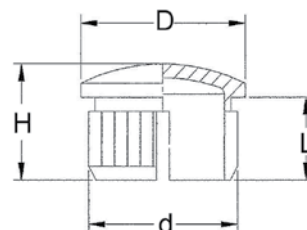
Mirror



Item No.	Tube Ø	Wall	A	B	C	Weight
FTBHRE316B90051	2"	1.5 mm	89 mm	50.8 mm	70 mm	420g

Push End Cap

316



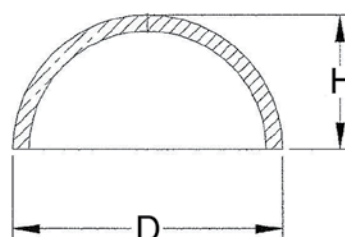
* Indent Only

Item No	Size	D	d	H	L	Finish
FTBPEC316038M	1.1/2" (38mm)	38 mm	35 mm	15 mm	10 mm	Mirror
FTBPEC316051M	2" (51mm)	51 mm	48 mm	16 mm	10 mm	Mirror
FTBPEC316038	1.1/2" (38mm)	38 mm	35 mm	15 mm	10 mm	Satin
FTBPEC316051	2" (51mm)	51 mm	48 mm	16 mm	10 mm	Satin
FTBPEC316063	2.1/2" (63mm)	63 mm	60 mm	20 mm	12 mm	Satin
FTBPEC316076I *	3" (76mm)	76 mm	73 mm	27 mm	16 mm	Satin

Domed End Cap

316

Satin



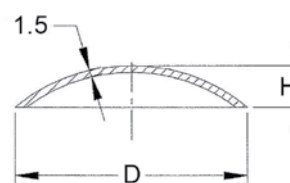
* Indent Only

Item No	Size	D mm	H mm	TH mm
FTBDEC316019	3/4" (19mm)	19	10	1.5
FTBDEC316025	1" (25mm)	25	13	1.5
FTBDEC316032	1.1/4" (32mm)	32	16	1.5
FTBDEC316038	1.1/2" (38mm)	38	20	1.5
FTBDEC316051	2" (51mm)	51	25	1.5
FTBDEC316063	2.1/2" (63mm)	63	32	1.5
FTBDEC316076	3" (76mm)	76	38	1.5
FTBDEC316100	4" (101mm)	101	51	1.5
FTBDEC316127I *	5" (127mm)	127	64	1.5

Curved Tube Cap

316

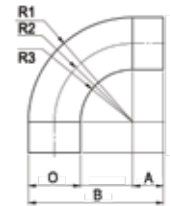
Satin



Item No	Size	D	H	TH
FTBCTC316038	1.1/2" (38mm)	38 mm	7 mm	1.5 mm
FTBCTC316051	2" (51mm)	51 mm	9 mm	1.5 mm
FTBCTC316063	2.1/2" (63mm)	63 mm	10.5 mm	1.5 mm
FTBCTC316076	3" (76mm)	76 mm	11.5 mm	1.5 mm

Tube Bend 90D

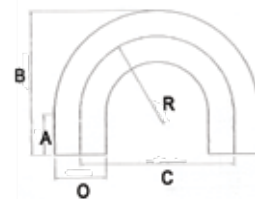
316



Item No	O	A	B	R1	R2	R3	Wall Thickness	Finish
FTBTB090316038M	38.1 mm	30 mm	106.3 mm	57.2 mm	76.3 mm	38.2 mm	1.5 mm	Mirror
FTBTB090316050M	50.8 mm	30 mm	131.6 mm	101.6 mm	76.2 mm	50.8 mm	1.5 mm	Mirror
FTBTB090316038S	38.1 mm	30 mm	106.3 mm	57.2 mm	76.3 mm	38.2 mm	1.5 mm	Satin
FTBTB090316050S	50.8 mm	30 mm	131.6 mm	101.6 mm	76.2 mm	50.8 mm	1.5 mm	Satin

Tube Bend 180D

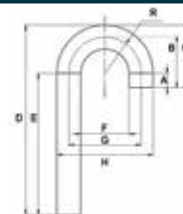
316



Item No	O	A	B	C	R	Wall Thickness	Finish
FTBTB180316038M	38.1 mm	30 mm	106.3 mm	114.4 mm	76.3 mm	1.5 mm	Mirror
FTBTB180316050M	50.8 mm	30 mm	131.6 mm	152.4 mm	76.2 mm	1.5 mm	Mirror
FTBTB180316038S	38.1 mm	30 mm	106.3 mm	114.4 mm	76.3 mm	1.5 mm	Satin
FTBTB180316050S	50.8 mm	30 mm	131.6 mm	152.4 mm	76.2 mm	1.5 mm	Satin

Tube Bend 180D C/W Leg

316

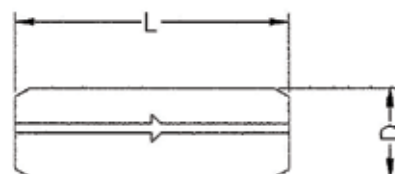


Unit mm

Item No	O	R	A	B	C	D	E	F	G	H	Wall Thickness	Finish
FTBTB1845316038M	38.1	57.2	30	87.2	106.3	450	323.7	76.3	114.4	152.5	1.5	Mirror
FTBTB1845316050M	50.8	76.2	30		131.6	450	298.4	104.6	152.4	203.2	1.5	Mirror
FTBTB1845316038S	38.1	57.2	30	87.2	106.3	450	323.7	76.3	114.4	152.5	1.5	Satin
FTBTB1845316050S	50.8	76.2	30		131.6	450	298.4	104.6	152.4	203.2	1.5	Satin

Tube Joint

304



Item Number	Size	L	D
FTBTJ304038	1.1/2"	114 mm	35 mm
FTBTJ304051	2"	148 mm	48 mm

Post Reducer Tapered

316

Mirror

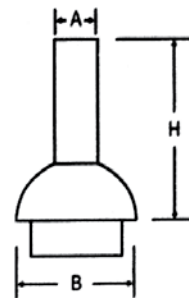


Item No.	Tube Ø	Wall	A	B	H	Weight
FTBPRT316038	1.5"	1.5 mm	0.75"	38.1 mm	81 mm	118g
FTBPRT316051	2"	1.5 mm	1"	50.8 mm	81 mm	198g

Post Reducer Dome

316

Mirror

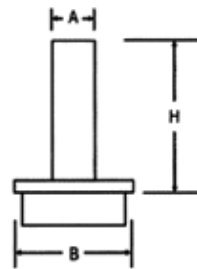


Item No.	Tube Ø	Wall	A	B	H	Weight
FTBPRD316051	2"	1.5 mm	1"	50.8 mm	87.5 mm	207g

Post Reducer Flat

316

Mirror

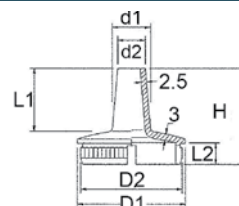


Item No.	Tube Ø	Wall	A	B	H	Weight
FTBPRF316038	1.5"	1.5 mm	0.75"	38.1 mm	87.5 mm	84g
FTBPRF316051	2"	1.5 mm	1"	50.8 mm	87.5 mm	167g

Railing Converter

316

Mirror



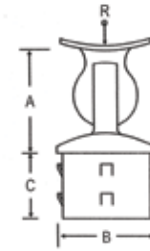
Unit mm

Item No	Size	D1	D2	d1	d2	L1	L2	H	Finish
FTBMRC316051	2" (51mm)	50.8	47.8	18	13	45	10	62	Mirror
FTBMRC316038	1.1/2" (38mm)	38.1	35	15	10	35	10	50	Mirror
FTBRC316051	2" (51mm)	50.8	47.8	18	13	45	10	62	Satin
FTBRC316038	1.1/2" (38mm)	38.1	35	15	10	35	10	50	Satin

Adjustable Rail Support Internal Fit

316

Mirror



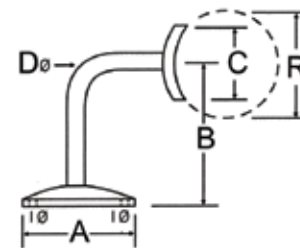
* Indent Only

Item No.	Tube Ø	Wall	A	B	C	R Suit Tube	Weight
FTBRSRIF316038I *	1.5	1.5 mm	45 mm	38.1 mm	29 mm	1.5" mm	161g
FTBRSRIF316051S	2"	1.5 mm	51 mm	50.8 mm	32 mm	2" mm	285g

Handrail Support - Radiused

316

Mirror

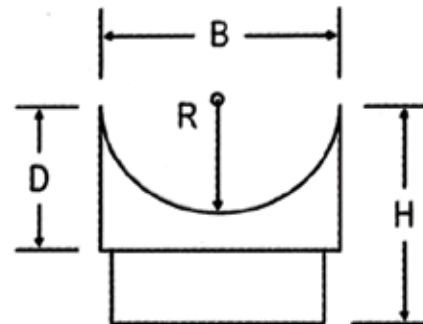


Item No.	A	B	C	D	I	R	Weight
FTBHRSR316038	60.5 mm	70 mm	31 mm	12 mm	5.5 mm	1.5"	247g
FTBHRSR316051	63 mm	85 mm	31 mm	12 mm	5.5 mm	2"	247g

Perpendicular Joiner Flush Fitting

316

Mirror



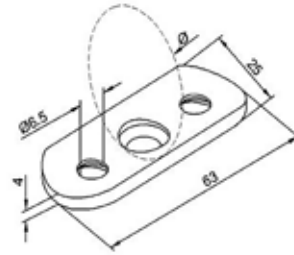
* Indent Only

Item No.	Tube Ø	Wall	B	D	H	R	Weight
		mm	mm	mm	mm	(Suit Tube)	g
FTBPJFF316025	1"	1.5	25.4	7	30	1"	30
FTBPJFF316025038	1"	1.5	38.1	7	30	1.5"	30
FTBPJFF316025050	1"	1.5	50.8	7	30	2"	30
FTBPJFF316038	1.5"	1.5	38.1	15	41	1.5"	89
FTBPJFF316038BI *	1.5"	1.5	38.1	15	41	1.5"	89
FTBPJFF316051	2"	1.5	50.8	32	57	2"	156

Saddle Plate

316

Mirror

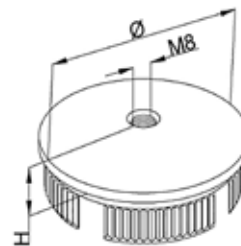


Item No.	Size	Suit
FTBRSPM316063	63x25x4mm	Round Tube 50.8mm
FTBSSPM316063	63x25x4mm	Square Tube (Flat)

End Cap With M8 Thread Hole

316

Mirror

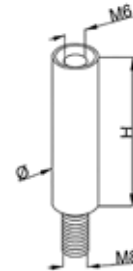


Item No.	Ø	H	Wall Thickness
FTBECTH316050	50.8 mm	8 mm	1.5 mm

Straight Pin

316

Mirror

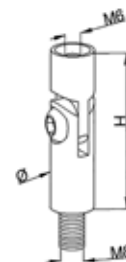


Item No.	Ø	H	Thread
FTBSPM014	14 mm	48 mm	M8 -> M6

Adjustable Pin

316

Mirror

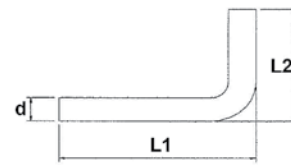


Item No.	Ø	H	Thread
FTBAPM014	14 mm	48 mm	M8 -> M6

L Bar

316

Mirror

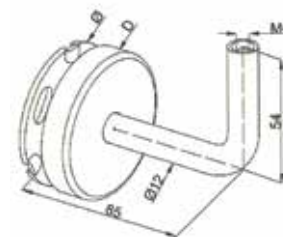


Item No.	Size	L1	L2	d
FTBLBAR316012M	60.5 mm	70 mm	31 mm	12 mm

Wall Bracket with M6 Hole

316

Mirror



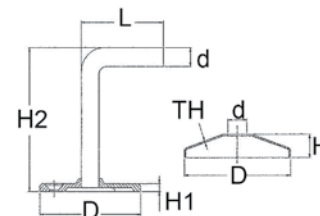
Item No.	Ø	D
FTBWBM006	60.5 mm	70 mm

Saddle Plate available, please see "Handrail Support" section

Wall Bracket & Cover

316

Mirror



Item No.	Size	D	d	H1	H2	L	H	TH	
FTWB3160126	12 mm	70 mm	12 mm	6 mm	90 mm	56 mm			(Not Suitable with Cover)
FTBWBC3160126	12 mm	70 mm	12 mm	5.5 mm	90 mm	56 mm			(Suitable with Cover)
FTBWBCOV3160126	12 mm	70 mm	12 mm				15 mm	1 mm	Cover Only

Disc

316

Mirror



Item No.	Finish	Thickness	Diameter
FTB316D	Mirror	3mm - 6mm	25 - 150 mm

51 mm Slotted Round Tube

316

Mirror

Manufactured to
ASTM A554


Single Slot



Double Slot



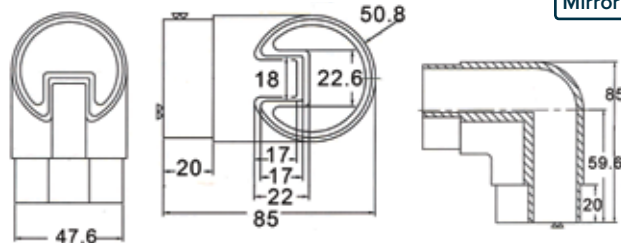
90 Deg Double Slot

Item No.	Size	Grade	Slot Size	Wall thick	Length	Shape
TR316SS15015050	50.8	316 #600	15mmx15mm	1.5mm	6m	Single Slot
TR316DS15015050	50.8	316 #600	15mmx15mm	1.5mm	6m	Double Slot
TR3169D15015050	50.8	316 #600	15mmx15mm	1.5mm	3m	90 Deg Double Slot

51 mm 90D Joiner

316

Mirror

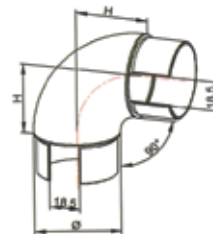


Item No.	Tube Ø	Wall	
FTB9JSS316050	51mm	1.5 mm	Single Slot

51 mm 90D Joiner Radiused

316

Mirror

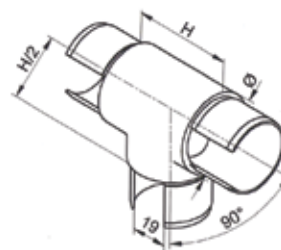


Item No.	Tube Ø	Wall	
FTBRJSS316050	51 mm	1.5 mm	Single Slot

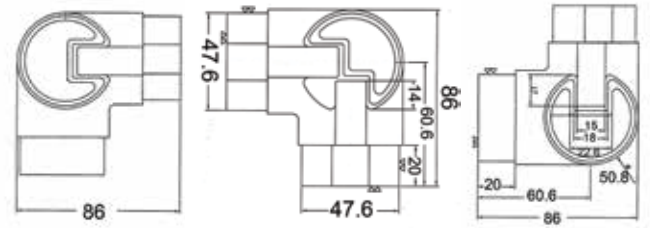
51 mm Tee

316

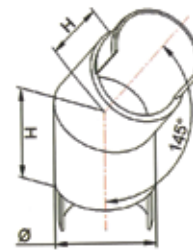
Mirror



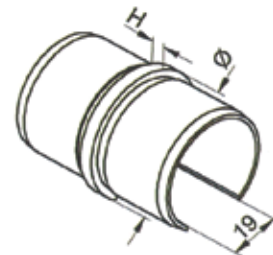
Item No.	Tube Ø	Wall	
FTBFTSS316051	51 mm	1.5 mm	Single Slot

51 mm 90 Degree Tee
316
Mirror


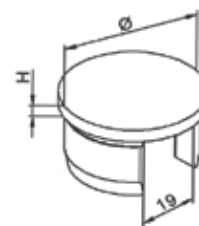
Item No.	Tube Ø	Wall	Weight	
FTBDTSS316051	51 mm	1.5 mm	695g	Single Slot

51 mm 145D Joiner
316
Mirror


Item No.	Tube Ø	Wall	
FTB14JSS316050	51 mm	1.5 mm	Single Slot

51 mm Inline Joiner
316
Mirror


Item No.	Tube Ø	Wall	H	
FTBIJSS316050	51 mm	1.5 mm	35 mm	Single Slot

51 mm End Cap
316
Mirror


Item No.	Tube Ø	Wall	H	
FTBECSS316051	51 mm	1.5 mm	4 mm	Single Slot
FTBECDS316051	51 mm	1.5 mm	4 mm	Double Slot

38 mm Slotted Round Tube

316

Mirror

Manufactured to
ASTM A554

Single Slot



Double Slot



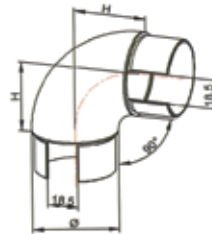
90 Deg Double Slot

Item No.	Size	Grade	Slot Size	Wall thick	Length	Shape
TR316SS15015038	38.1	316 Mirror polish	15mmx15mm	1.5mm	6m	Single Slot

38 mm 90D Joiner Radiused

316

Mirror

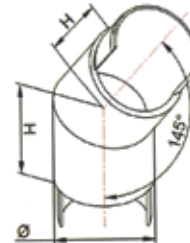


Item No.	Tube Ø	Wall	Shape
FTBRJSS316038	38 mm	1.5 mm	Single Slot

38 mm 145D Joiner

316

Mirror

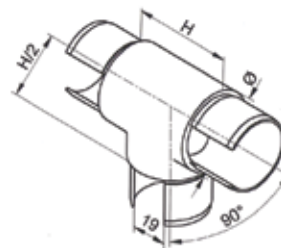


Item No.	Tube Ø	Wall	Shape
FTB14JSS316038	38 mm	1.5 mm	Single Slot

38 mm Tee

316

Mirror

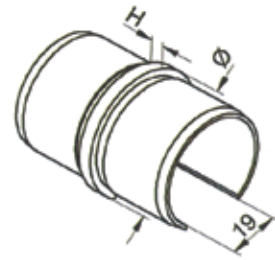


Item No.	Tube Ø	Wall	Shape
FTBFTSS316038	38 mm	1.5 mm	Single Slot

38 mm Inline Joiner

316

Mirror

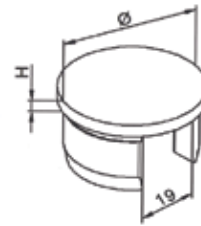


Item No.	Tube Ø	Wall	H	
FTBIJSS316038	38 mm	1.5 mm	25 mm	Single Slot

38 mm End Cap

316

Mirror



Item No.	Tube Ø	Wall	H	
FTBECSS316038	38 mm	1.5 mm	4 mm	Single Slot

25 mm Slotted Round Tube

316

Mirror



Single Slot



Double Slot



90 Deg Double Slot

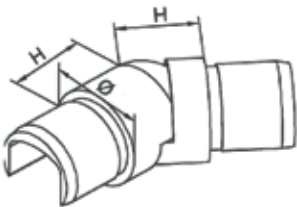
Manufactured to
ASTM A554

Item No.	Size	Grade	Slot Size	Wall thick	Length	Shape
TR316SS15015025	25.4	316 Mirror polish	14mmx14mm	1.5mm	6m	Single Slot

25 mm Adjustable Joiner (Horizontal)

316

Mirror

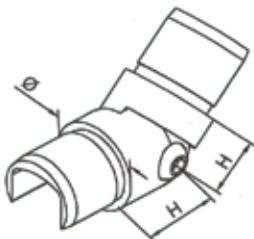


Item No.	Size
FTBAJHSS316025	25.4 mm

25 mm Adjustable Joiner (Vertical)

316

Mirror

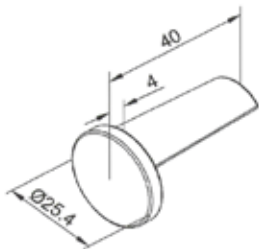


Item No.	Size
FTBAJVSS316025	25.4 mm

25 mm End Cap

316

Mirror

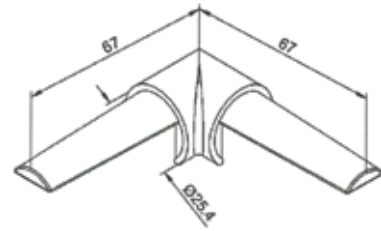


Item No.	Size
FTBECSS316025	25.4 mm

25 mm 90D Joiner

316

Mirror

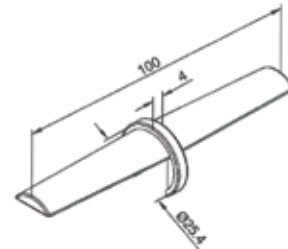


Item No.	Size
FTB9JSS316025	25.4 mm

25 mm Inline Joiner

316

Mirror

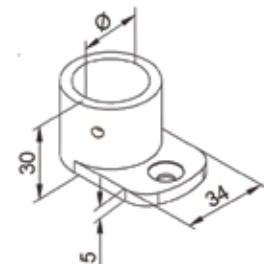


Item No.	Size
FTB9JSS316025	25.4 mm

25 mm Wall Flange (Solid)

316

Mirror

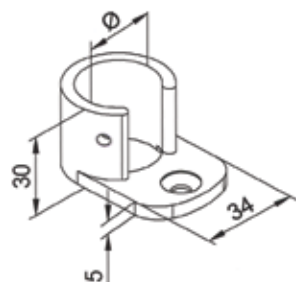


Item No.	Size
FTBWFSS316025	25.4 mm

25 mm Wall Flange (Slotted)

316

Mirror



Item No.	Size
FTBWFSSS316025	25.4 mm

Square Tube

Manufactured to ASTM A554

Available in welded only, polished or unpolished.

Grades 304 and 316.

180 grit polish, # 320 grit polish

400 grit polish, # 600 grit polish & HiPol

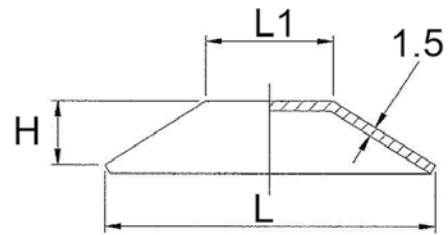
1000 grit, Mirror

unpolished

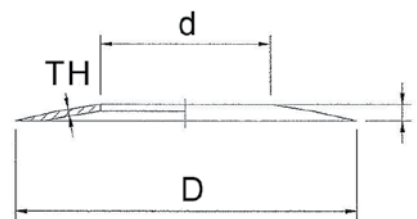


Square Wall	Sections Size	304 #180 Grit	304 Mirror	316 Unpolished	316 #180 Grit	316 #320 Grit	316 Mirror	Weight kg/mtr
		TS304	TS304+MP	TS316	TS316+P	TS316+P	TS316+MP	
1.2	12.7 x 12.7	●	○	○	●	○	○	0.441
	15.88 x 15.88	○	○	○	○	○	○	0.631
	19.05 x 19.05	●	○	○	○	○	○	0.673
	22.22 x 22.22	●	○	○	○	○	○	0.883
	25.4 x 25.4	●	○	○	○	○	○	0.824
	31.8 x 31.8	●	○	○	○	○	○	1.085
	38.1 x 38.1	●	○	○	○	○	○	1.440
	50.8 x 50.8	●	○	○	○	○	○	1.900
1.5	12.0 x 12.0	○	○	○	○	○	●	0.55
	12.7 x 12.7	○	○	○	●	○	○	0.55
	15.0 x 15.0	○	○	○	○	○	●	0.90
	19.0 x 19.0	○	○	○	○	○	●	1.17
	25.4 x 25.4	○	○	○	○	○	●	1.552
	31.8 x 31.8	○	○	○	○	○	●	1.849
	38.1 x 38.1	○	○	○	○	○	●	1.875
	50.8 x 50.8	○	○	○	○	○	●	2.489
1.6	12.7 x 12.7	●	○	○	○	○	○	0.670
	19.05 x 19.05	●	○	○	○	○	○	1.174
	22.22 x 22.22	○	○	○	○	○	○	1.396
	25.4 x 25.4	●	○	○	●	○	○	1.552
	31.8 x 31.8	●	○	○	●	○	○	1.849
	38.1 x 38.1	●	●	○	●	○	○	1.875
	50.8 x 50.8	●	○	○	●	○	○	2.489
	60.0 x 60.0	●	○	○	○	○	○	3.058
	80.0 x 80.0	●	○	○	○	○	○	4.078
2.0	25.4 x 25.4	●	○	○	○	○	○	1.470
	31.8 x 31.8	●	○	○	○	○	○	1.890
	38.1 x 38.1	●	○	○	○	○	○	2.350
	50.8 x 50.8	●	○	●	○	○	○	3.400
3.0	25.4 x 25.4	●	○	○	○	○	○	2.100
	38.1 x 38.1	●	○	○	●	○	○	3.300
	50.8 x 50.8	●	○	●	○	●	●	4.480
	60.0 x 60.0	●	○	○	○	○	○	5.491
	80.0 x 80.0	●	○	●	○	●	●	7.300
	100.0 x 100.0	●	○	●	○	●	○	9.600
	150.0 x 150.0	●	○	○	●	○	○	13.760
4.0	50.0 x 50.0	●	○	○	○	○	○	6.000
5.0	80.0 x 80.0	○	○	○	●	○	○	11.700
	100.0 x 100.0	●	○	○	●	○	○	14.820
	150.0 x 150.0	●	○	○	●	○	○	22.620
6.0	200.0 x 200.0	●	○	○	○	○	○	36.320

Stocked Item ○ Market Available

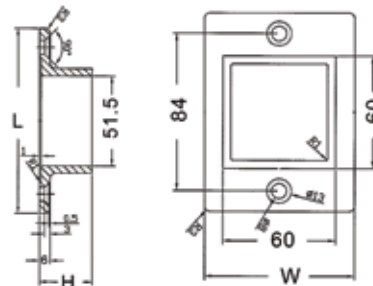
Square Tube Cap
316
Satin


Item No.	Size	L	L1	H	TH
FTBSTC316051	2"	51.5 mm	20 mm	10 mm	1.5 mm

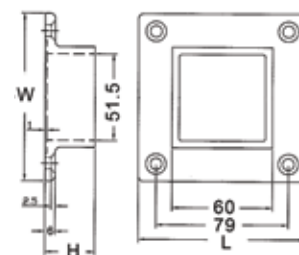
Square Tube Cover
316
Satin


* Indent Only

Item No.	Size	D	d	H	TH
FTBSTCOV316038I *	3" - 1.1/2"	76.2 mm	38.2x38.2 mm	7 mm	1.2 mm
FTBSTCOV316051	4" - 2"	102 mm	51.5x51.5 mm	9.5 mm	1.5 mm

Oblong Base/Flange
316
Mirror


Item No	Size	W	L	H
FTBSBPF316051	51 mm	80 mm	106 mm	30 mm

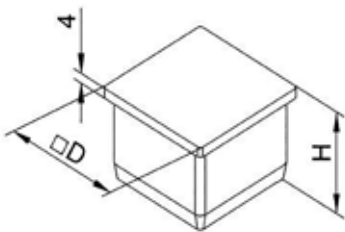
Square Tube Base/Flange
316
Mirror


Item No	Size	W	L	H
FTBSTF316051	51 mm	100 mm	100 mm	30 mm

Flush Fit Square End Cap

316

Mirror

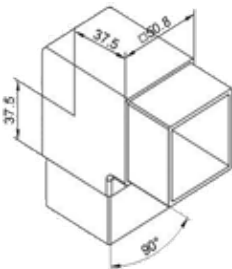
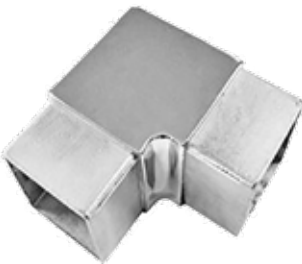


Item No.	D	H
FTBSEC316038M	38.1 x 38.1 mm	29 mm
FTBSTPC316051	51 x 51 mm	33 mm

Flush Fit Square Elbow

316

Mirror

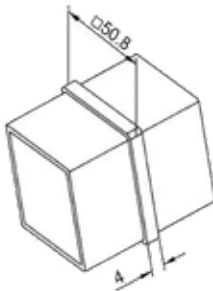


Item No.	D
FTBSFJE316051	50.8 x 50.8mm

Flush Fit Square Inline Joiner

316

Mirror

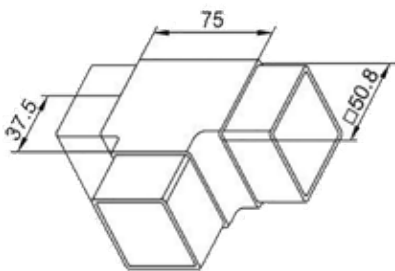


Item No.	D
FTBSTIJP316051	50.8 x 50.8mm

Flush Fit Square Equal Tee

316

Mirror

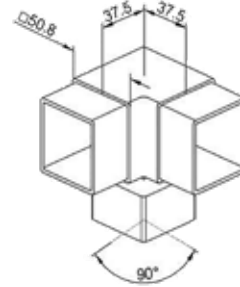


Item No.	D
FTBSTETP316051	50.8 x 50.8mm

Flush Fit Square 90 ° Tee

316

Mirror



Item No.	D
FTBSTDTP316051	50.8 x 50.8mm

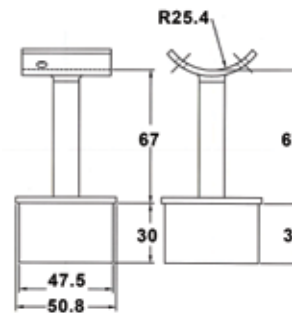
Flush Fit Square Post Reducer

316

Mirror



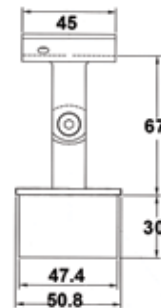
Fixed



Item No.	Tube Ø	Wall	Weight
FTBSPR316051	51 mm	1.5 mm	270g



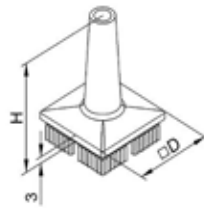
Adjustable



Item No.	Tube Ø	Wall	Weight
FTBSPRA316051	51 mm	1.5 mm	300g

Square Railing Converter

316



Item No.	D	H	Finish
FTBSRC316038M	38.1 x 38.1 mm	50 mm	Mirror
FTBSRC316050M	50.8 x 50.8 mm	55 mm	Mirror
FTBSRC316038	38.1 x 38.1	50	Satin
FTBSRC316050	50.8 x 50.8	55	Satin

Bolt Down Adjustable Foot

304



Item No.	Thread	Dia	Stem	Weight	Item No.	Thread	Tube Type	Weight
FTBAF304070050	M16 304	50 mm	70 mm	109g	FTBNI025	M16	25 mm Square	25g
FTBAF304070065	M16 304	65 mm	70 mm	125g	FTBNI032	M16	32 mm Square	56g
FTBAF304105050	M16 304	50 mm	105 mm	162g	FTBNI038	M16	38 mm Square	63g
FTBAF304105065	M16 304	65 mm	105 mm	200g	FTBNI050	M16	50 mm Square	153g

Slotted Square Tube

316

Manufactured to ASTM A554

Mirror



Single Slot



Double Slot (Opposite)



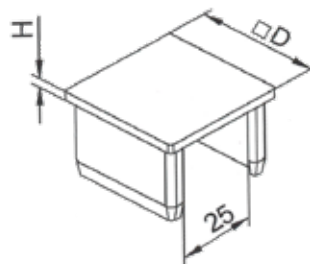
Double Slot (90deg)

Item No.	Size	Grade	Slot Size	Wall thick	Length	Shape
TS316SS16015050	50mm x 50mm	316 Mirror Polish	15mm x 15mm	1.5mm	3m	Single Slot
TS316DS16015050	50mm x 50mm	316 Mirror Polish	15mm x 15mm	1.5mm	3m	Double Slot (Opposite)
TS3169DS16015050	50mm x 50mm	316 Mirror Polish	15mm x 15mm	1.5mm	3m	Double Slot 90Deg

Slotted Square Tube End Cap

316

Mirror



Item No.	Tube	Slot	Height	Weight
FTBESSQ316050	51 mm	15 mm	28 mm	160g

Rectangular Tube

Manufactured to ASTM A554

Available in welded only, polished or unpolished.

Grades 304 and 316.

180 grit polish, # 320 grit polish

400 grit polish, # 600 grit polish & HiPol

1000 grit, Mirror
unpolished



Size	304L # 180 Grit	304 # 320 grit	316 # 180 grit	316L # 320 Grit	316L # 400 Grit	316 Mirror	Unpolished	Weight kg/mtr
	TSB304	TSB304	TSB316	TSB316	TSB316	TSB316	TSB316	
Rectangular 40 x 20 x 1.6	○	●	○	○	○	○	○	1.42
50 x 25 x 1.5 *	○	○	○	○	○	●	○	1.90
50 x 25 x 1.6 *	●	○	●	○	○	○	○	1.90
50 x 25 x 3.0 *	○	○	○	○	●	○	○	3.30
60 x 40 x 1.5	○	○	○	○	○	●	○	1.90
60 x 40 x 2.0	○	○	○	○	○	●	○	4.50
65 x 38 x 3.0	○	○	○	○	○	○	○	5.42
75 x 25 x 1.6	○	○	○	●	○	○	○	2.42
80 x 40 x 1.5	○	○	○	○	○	●	○	3.00
80 x 40 x 1.6	●	○	○	○	○	○	○	3.05
80 x 40 x 3.0	●	○	○	●	○	○	●	5.58
100 x 50 x 3.0	○	○	●	○	○	○	●	7.36
100 x 50 x 5.0	●	○	○	○	○	○	○	10.80
150 x 75 x 5.0	●	○	○	○	○	○	○	16.77
150 x 100 x 5.0	●	○	●	○	○	○	○	18.72
200 x 100 x 3.0	●	○	○	○	○	○	○	13.76
200 x 100 x 5.0	●	○	●	○	○	○	○	22.62

* could be in imperial size

Oval Tube

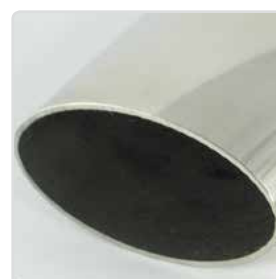
Manufactured to ASTM A554

Material: 316

#600 grit polished

1.5mm wall thickness

Hipol available upon request




Elliptical (Oval)	Triangle	Teardrop	"D" Section
TR316OV	-	-	TR316D
38 x 23mmx1.5 ●	24mm ○	48 x 25.5mm ○	40 x 19mm ○ 55 x 28mm ○
46 x 28mmx1.5 ○	37mm ○		47 x 25mm ○ 55 x 27mm ○
75 x 42mm x1.5 ●	51mm ○		48 x 24mm ○ 62 x 34mm ○
	78mm ○		48 x 23mm ○ 63 x 33mm ○
62 x 38mm x 1.5 ●	105mm ○		50 x 25mm ○ 62 x 31mm ● TR316D15063031
(#1000Grit)			55 x 29mm



50 x 25 mm Rectangular Slotted Tube

316

Mirror




Manufactured to
ASTM A554

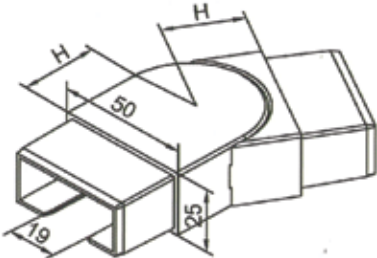
Item No.	Size	Grade	Slot Size	Wall thick	Length	Shape
TS316SS15050025	50mm x 25mm	316	15mm x 15mm	1.5mm	6m	Single Slot Rectangular Tube

50 x 25 mm Adjustable Joiner (Horizontal)

316

Mirror






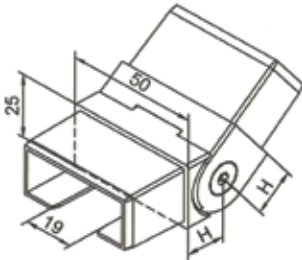
Item No.	Size
FTBRTAJH165025M	50 x 25 x 1.5 mm

50 x 25 mm Adjustable Joiner (Vertical)

316

Mirror






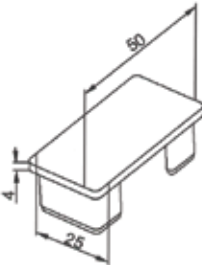
Item No.	Size
FTBRTAJV165025M	50 x 25 x 1.5 mm

50 x 25 mm End Cap

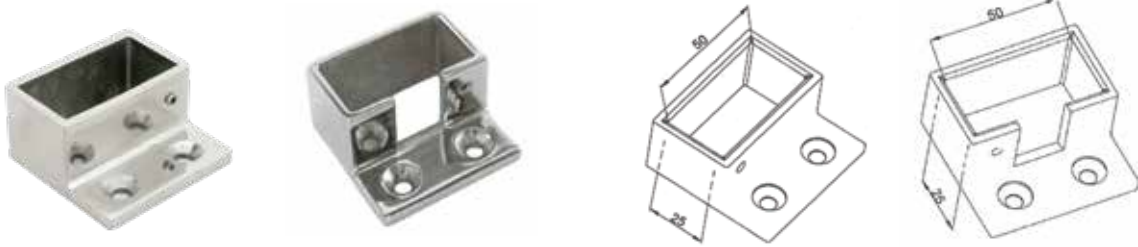
316

Mirror





Item No.	Size
FTBRTEC31605025M	50 x 25 x 1.5 mm

50 x 25 mm Wall Flange
316
Mirror


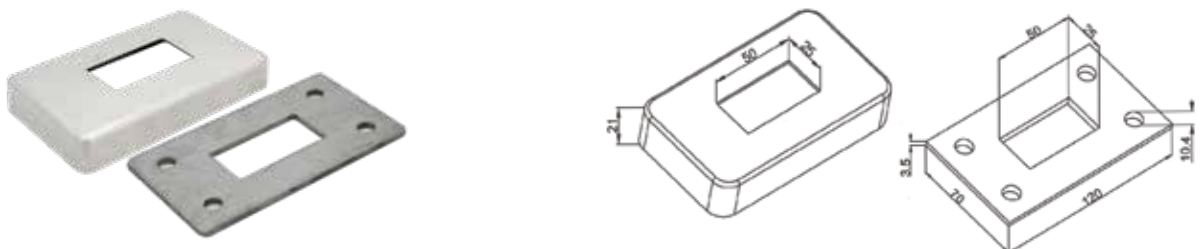
Item No.	Type	Size
FTBRTWF31605025M	Solid Wall Flange	50 x 25 x 1.5 mm
FTBRTWFS3165025M	Slotted Wall Flange	50 x 25 x 1.5 mm

50 x 25 mm 90D Joiner
316
Mirror


Item No.	Size
FTBRT9J31605025M	50 x 25 x 1.5 mm

50 x 25 mm Inline Joiner
316
Mirror


Item No.	Size
FTBRTIJ31605025M	50 x 25 x 1.5 mm

50 x 25 mm Base Plate & Cover
316
Mirror



Item No.	Size
FTBRTBPC165025M	50 x 25 x 1.5 mm

25 x 21 mm Rectangular Slotted Tube

316

Mirror

Manufactured to
ASTM A554




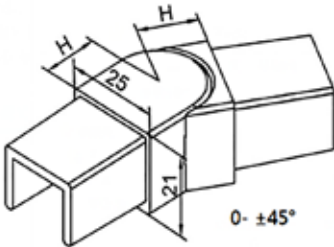
Item No.	Size	Grade	Slot Size	Wall thick	Length	Shape
TS316SS12025021	25mm x 21mm	316	14mm x 14mm	1.2mm	6m	Single Slot Rectangular Tube

25 x 21 mm Adjustable Joiner (Horizontal)

316

Mirror






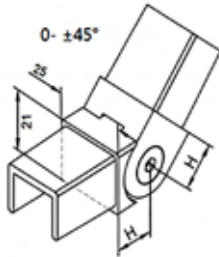
Item No.	Size
FTBSSAJH316025M	25 x 21 x 1.2 mm

25 x 21 mm Adjustable Joiner (Vertical)

316

Mirror






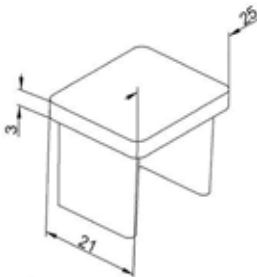
Item No.	Size
FTBSSAJV316025M	25 x 21 x 1.2 mm

25 x 21 mm End Cap

316

Mirror



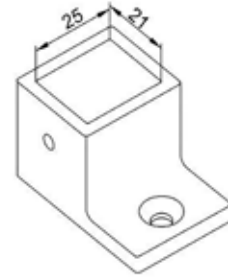


Item No.	Size
FTBSSEC316025M	25 x 21 x 1.2 mm

25 x 21 mm Solid Wall Flange

316

Mirror

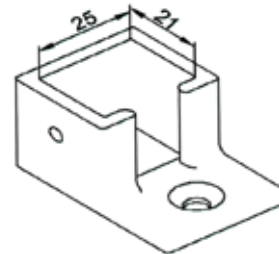


Item No.	Size
FTBSWFS316025M	25 x 21 x 1.2 mm

25 x 21 mm Slotted Wall Flange

316

Mirror

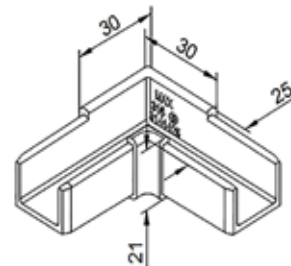


Item No.	Size
FTBSSWFS316025M	25 x 21 x 1.2 mm

25 x 21 mm 90D Bend

316

Mirror

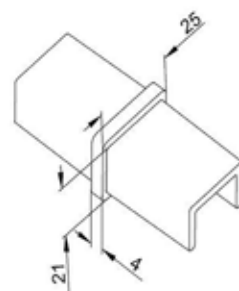


Item No.	Size
FTBSS9J316025M	25 x 21 x 1.2 mm

25 x 21 mm Inline Joiner

316

Mirror



Item No.	Size
FTBSSIJ316025M	25 x 21 x 1.2 mm

Flat Rectangular Tube

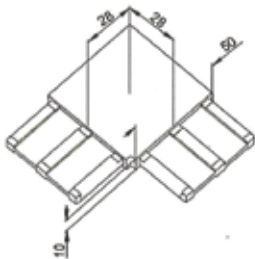


Manufactured to
ASTM A554

Item No.	Size	Grade	Grit	Availability
TSB31615050010P	50 x 10 x 1.5	316	# 600	●
TSB31615070010P	70 x 10 x 1.5	316	# 600	●
TSB31615050010	50 x 10 x 1.5	316	# 320	●

Flat Tube 90D Joiner

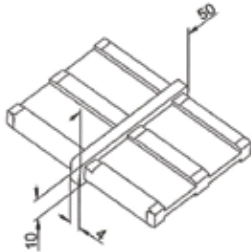
316



Item No.	Finish	Size
FTBFT9J31605010M	Mirror	50 x 10 x 1.5 mm
FTBFT9J31605010	Satin	50 x 10 x 1.5 mm

Flat Tube Inline Joiner

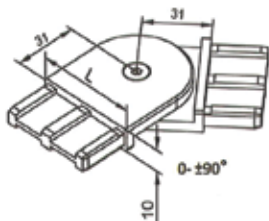
316



Item No.	Finish	Size
FTBFTIJ31605010M	Mirror	50 x 10 x 1.5 mm
FTBFTIJ31605010	Satin	50 x 10 x 1.5 mm

Flat Tube Adjustable Joiner - Horizontal

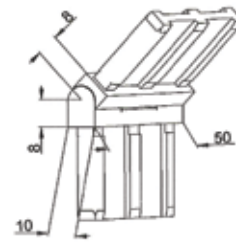
316



Item No.	Finish	Size
FTBFTAH31605010M	Mirror	50 x 10 x 1.5 mm
FTBFTAH31605010	Satin	50 x 10 x 1.5 mm

Flat Tube Adjustable Joiner - Vertical

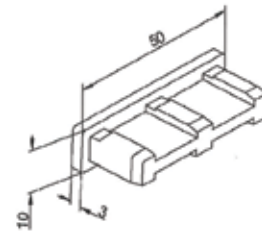
316



Item No.	Finish	Size
FTBFTAJV3165010M	Mirror	50 x 10 x 1.5 mm
FTBFTAJV3165010	Satin	50 x 10 x 1.5 mm

Flat Tube End Cap

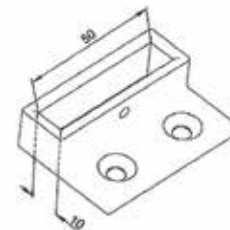
316



Item No.	Finish	Size
FTBFTEC3165010M	Mirror	50 x 10 x 1.5 mm
FTBFTEC3165010	Satin	50 x 10 x 1.5 mm

Flat Tube Wall Flange

316



Item No.	Finish	Size
FTBFTWF3165010M	Mirror	50 x 10 x 1.5 mm
FTBFTWF3165010	Satin	50 x 10 x 1.5 mm

Wire

316



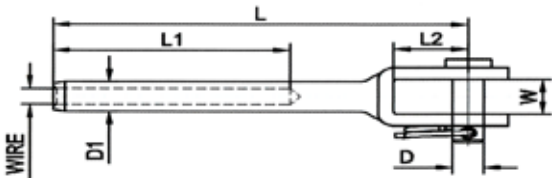
sold by metre or by reel (305 mtrs)

Item No.	Size	Type
NNWR316032	3.2mm	1x19

Fork Terminal

316

Mirror

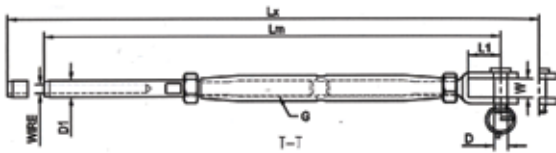


Item No.	Wire	L	L1	L2	W	D	D1
NNFT316032	3/3.2 mm	67 mm	38 mm	12 mm	7.5 mm	5 mm	6.4 mm

Rigging Screw Fork/Swage

316

Mirror

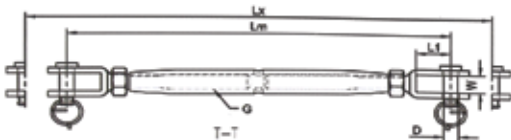


Item no.	G	Wire	Lx	Lm	L1	W	D	D1
NNPRSJ316032M5	M5	3/3.2 mm	213 mm	159 mm	12 mm	7.5 mm	5 mm	6.4 mm
NNPRSJ316032M6	M6	3/3.2 mm	233 mm	170 mm	13 mm	9.5 mm	6 mm	6.4 mm

Rigging Screw Fork/Fork

316

Mirror

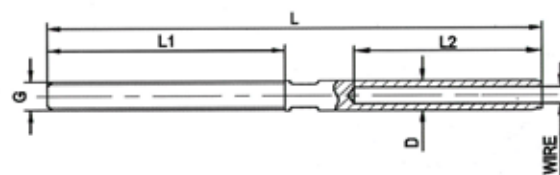


Item No.	G	Lx	L	L1	W	D
FTBRSFF316006	M6	200 mm	138 mm	12 mm	7.5 mm	5 mm

Thread Terminal

316

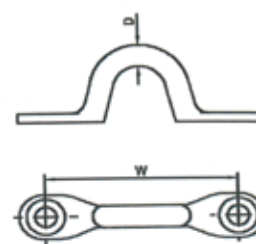
Mirror



Item No.	G	Wire	L	L1	L	D	Type
NNST316032L	M6	3/3.2 mm	100 mm	48 mm	38 mm	6.35	Left
NNST316032R	M6	3/3.2 mm	100 mm	48 mm	38 mm	6.35	Right

Saddle

316



Item No.	Wire	W	D
NNSEB316	5 mm	40 mm	5 mm

Screws

304



CSK SQ
Decking Screw
(NNDSS304)



Button Head Screw
(NNBHS316025)

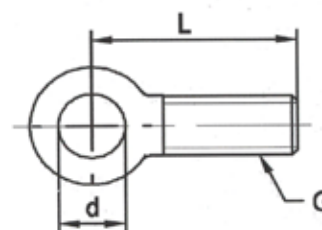


Rivet Nut
(NNRNSMM6)

Eye Bolt

316

Mirror

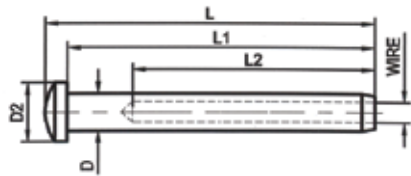


Item	G	L	d
NNSEB316	M6	20 mm	6.5 mm

Dome Head Tensioner

316

Mirror

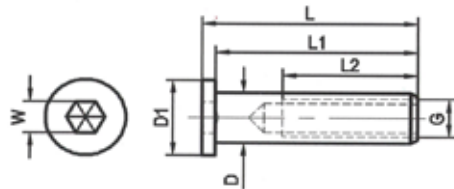


Item No.	Wire	L	L1	L2	D
NNHST316	3/3.2 mm	52 mm	48.5 mm	38 mm	6.35 mm

Allen Key Tensioner

316

Mirror

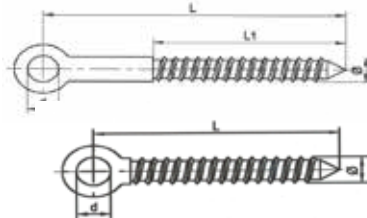


Item No.	G	L	L1	L2	D	D1	W
NNHST316	M6	32 mm	30 mm	20 mm	8 mm	12 mm	5 mm

Eye Screw

316

Mirror



Item No.		Ø	L	d
NNLESL316	Long Neck	6 mm	55 mm	6.5 mm
NNLESN316	No Neck	6 mm	45 mm	6.5 mm

Tools for Hire

316

Mirror

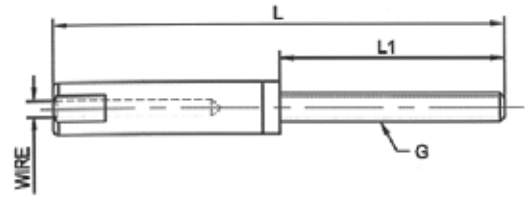


Professional Heavy Rivet Gun & Hydraulic Swager 12t are available for hire.

Terminal Thread/Swageless

316

Easyloc

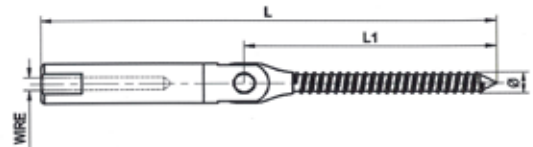


Item No.	G	Wire	L	L1
FTBETT316006	M6	3/3.2 mm	86.2 mm	43 mm

Adjustable Terminal (Lag Screw / Swageless)

316

Easyloc

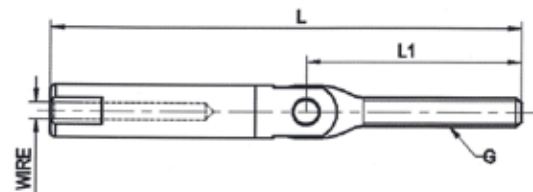


Item No.	G	Wire	Lx	L
FTBETLS316006	M6	3/3.2 mm	230 mm	170 mm

Adjustable Terminal (Thread / Swageless)

316

Easyloc

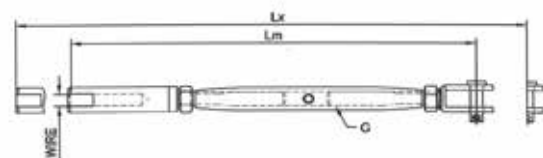


Item No.	G	Wire	L	L1
FTBETLT316006	M6	3/3.2 mm	92 mm	42 mm

Rigging Screw (Fork / Swageless)

316

Easyloc

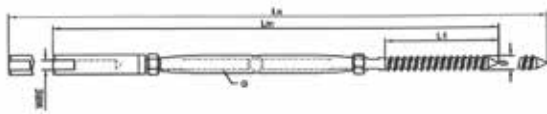


Item No.	G	Wire	Lx	L
FTBERSF316006	M6	3/3.2 mm	230 mm	170 mm

Rigging Screw (Lag Screw / Swageless)

316

Easyloc

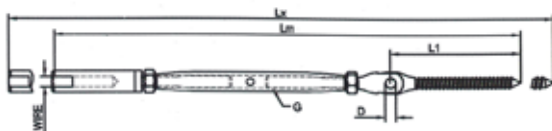


Item No.	G	Wire	Lx	L	L1	Ø
FTBERSL316006	M6	3/3.2 mm	250 mm	190 mm	50 mm	6 mm

Adjustable Rigging Screw (Lag Screw / Swageless)

316

Easyloc

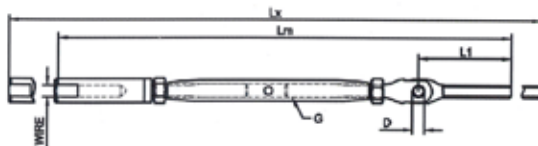


Item No.	G	Wire	Lx	L	L1	D
FTBERLS316006	M6	3/3.2 mm	290 mm	225 mm	62 mm	5 mm

Adjustable Rigging Screw (Thread / Swageless)

316

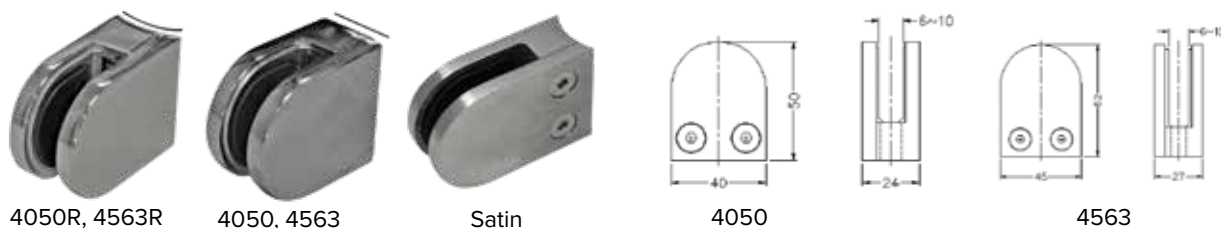
Easyloc



Item No.	G	Wire	Lx	L	L1	D
FTBERLT316006	M6	3/3.2 mm	260 mm	225 mm	42 mm	5 mm

Round Glass Clamp

316



All Glass Clamps are Grade 316 Stainless Steel Mirror Polished/Electroplated.

All Glass Clamps are packaged c/w range of Gaskets, Security Pin (where applicable to Model) and Allen Key.

NOTE: (1) Model number 4050R & 4050 can hold up to 35kgs each.

(2) Model number 4563R & 4563 can hold up to 40 kgs each, E.G. 4 clamps can hold up to 140-160 kgs. If installed with security pin, each clamp can hold 135 or 140 kgs, so 4 clamps can hold up to 540-560 kgs.

Model No.	Stock Code	Description	Suit Post	Finish	H	L	W
4050R	FTBGCRB316M	Glass Clamp Curved Base (Suit 6, 8, 10 mm glass)	Round	Mirror	40mm	50mm	24mm
4050	FTBGCFB316M	Glass Clamp Flat Base (Suit 6, 8, 10 mm glass)	Square/Flat	Mirror	40mm	50mm	24mm
4563R	FTBGCRB316L	Glass Clamp Curved Base (Suit 6, 8, 10, 12 mm glass)	Round	Mirror	45mm	62mm	27mm
4563	FTBGCFB316L	Glass Clamp Flat Base (Suit 6, 8, 10, 12 mm glass)	Square/Flat	Mirror	45mm	62mm	27mm
	FTBSGCD316038	Glass Clamp Round Base (Suit 8-10 mm glass)	Round suit 38.1 mm tube	Satin	45mm	65mm	24mm

Square Glass Clamp

316



NOTE: (1) Model Number 5555R & 5555 can hold 40 kgs each, E.G. 4 clamps can hold 140-160 kgs. If installed with security pin, each clamp can hold 135 or 140 kgs, so 4 clamps can hold 540-560 kgs

Model No.	Item No.	Description	Suit Post	Finish	H	L	W
5555R	FTBGCSRB316	Glass Clamp Square Curved Base (Suit 8, 10, 12 mm glass)	Round	Mirror Finish	55mm	55mm	34mm
5555	FTBGCSFB316	Glass Clamp Square Flat Base (Suit 8, 10, 12 mm glass)	Square/Flat	Mirror Finish	55mm	55mm	34mm

GLASS CLAMPS & COMPONENTS DISCLAIMER / WARRANTY

Stirlings Australia disclaims all warranties and representations, express or implied, with regard to Glass Clamps and components, including all warranties of merchantability and fitness for any particular use or purpose. Goods supplied are subject to the chemical and mechanical composition, physical properties and product standards of the original manufacturer and are covered by such warranty as specified by the, original manufacturer. The company does not give any warranty beyond such warranty.

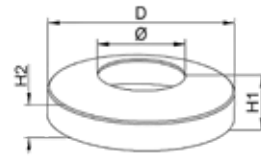
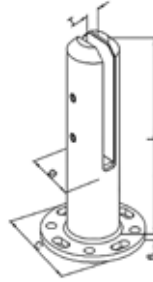
If this product is defective, Stirlings Australia's sole obligation, and your sole remedy, will be to provide you with a replacement, but only if you first return the defective product to Stirlings Australia. We have no obligation to replace the product if the defect resulted from improper installation, abuse or misuse. Neither Stirlings Australia nor its affiliates, suppliers, or agents are liable for any special, incidental, indirect, consequential or punitive damages whatsoever (including but not limited to lost profits and damages resulting from loss of the use of the product or any other pecuniary loss) however caused, including negligence and regardless of the form of action, whether in contract or tort.

Stirlings Australia's total liability for damages if the product is defective will not under any circumstances exceed the price that you paid for the product.

Round Deck Mounted Spigot

2205

Mirror

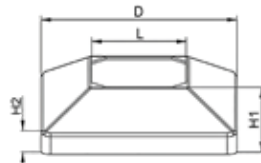
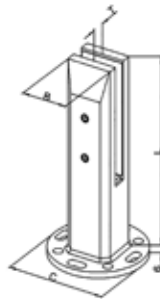


Item No.	T	L	Ø	C	Glass		Ø	D	H1	H2
FTB2205RSBPWC	15 mm	190 mm	50 mm	100 mm	12 mm	Cover	50.8 mm	100 mm	24 mm	15 mm

Square Deck Mounted Spigot

2205

Mirror

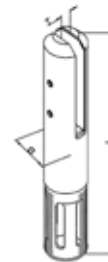


Item No.	T	L	B	C	Glass		L	D	H1	H2
FTB2205SSBPWC	15 mm	190 mm	48 mm	100 mm	12 mm	Cover	48 mm	103 mm	26 mm	10 mm

Round Core Drill Spigot

2205

Mirror

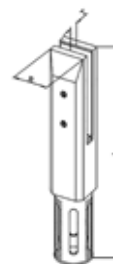


Item No.	T	L	Ø	Glass	
FTB2205RSCDWC	15 mm	280 mm	50 mm	12 mm	Cover Diameter 102mm, Height 11mm

Round Core Drill Spigot

2205

Mirror

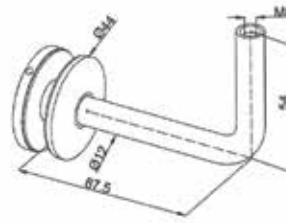


Item No.	T	L	Ø	Glass	
FTB2205SSCDWC	15 mm	280 mm	48 mm	12 mm	Cover Diameter 100mm, Height 10mm

Glass Support with M6 Hole

316

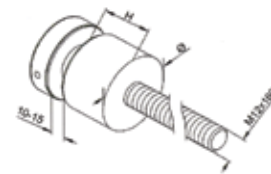
Mirror



Item No.	Glass
FTBGSM316006	12 mm
Saddle Plate available, please see "Handrail Support" section	

Glass to Wall Standoff

316

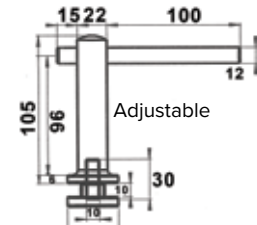
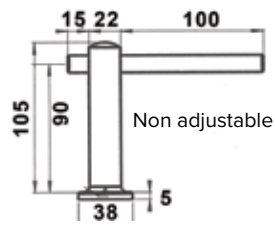


Item No.	Diameter	Body	Finish
FTBSGSO316050	38.1 mm	50 mm	Satin
FTBSGDO316038S	38.1 mm	30 mm	Satin
FTBMGSO316038	38.1 mm	30 mm	Mirror
FTBMGSO316050	50.8 mm	30 mm	Mirror

HANDRAIL BRACKET FOR GLASS PANEL

316

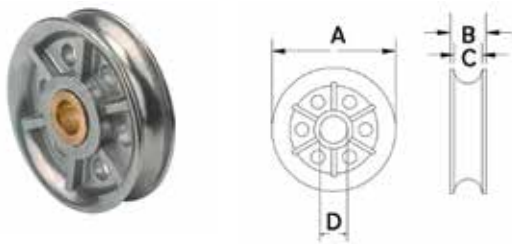
Mirror



Item No.	Tube Ø		Weight
FTBAHBG316051	51 mm	Adjustable	485g
FTBHBG316051	51 mm	Non adjustable	485g

Wire Rope Sheave

304



Unit mm

Item No.	A	B	C	D
NNWRS30402711	26.8	17.3	11.0	8
NNWRS30403111	31.0	16.5	11.5	8
NNWRS30405014	50.0	19.0	14.0	10
NNWRS30407514	75.5	19.4	14.5	13
NNWRS30407522	75.5	28.5	21.8	13
NNWRS30410017	100.8	24.9	17.4	17
NNWRS30410027	100.8	33.0	26.8	17
NNWRS30412720	127.0	25.5	19.2	17

Chain Link

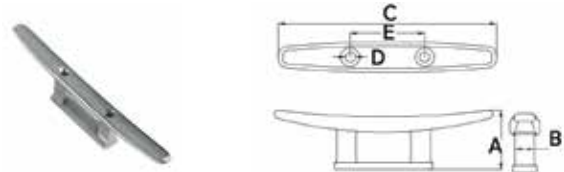
316



Item No.	Size
NN316MLC003	M3
NN316MLC004	M4
NN316MLC005	M5
NN316MLC006	M6
NN316MLC008	M8
NN316MLC0010	M10

Blue Water Cleat

316

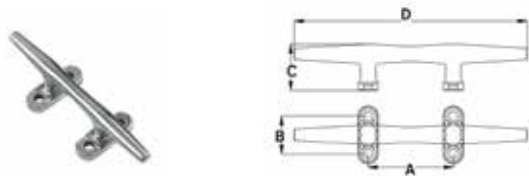


Unit mm

Item No.	A	B	C	D	E
NNBWC316150	32.5	12.0	149	6.5	45
NNBWC316200	42.0	15.6	200	8.5	55

Low Flat Cleat

316



Unit mm

Item No.	A	B	C	D
NNLFC316100	37.8	22.5	23.0	97.5
NNLFC316150	54.0	27.0	30.5	155.0
NNLFC316200	69.0	33.0	37.0	200.0

Rope Cleat

316



Unit mm

Item No.	Ø	A	B
NNRC316068	4.0	10.0	68.0
NNRC316114	5.9	20.5	114.0
NNRC316150	6.7	23.0	150.0

Cup Hook

304

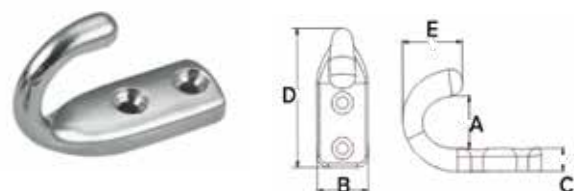


Unit mm

Item No.	Size	Ø	A	B	C
NNCH304016	16	2.2	16	5	10
NNCH304020	20	2.4	20	7	12
NNCH304025	25	2.8	25	10	14
NNCH304028	28	3.2	28	10	15
NNCH304032	32	3.5	32	13	17

Deck Hook Type EL

316

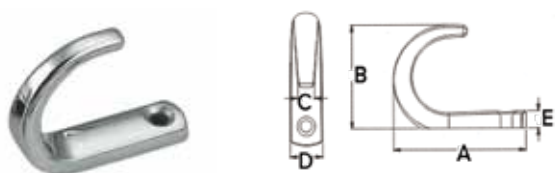


Unit mm

Item No.	A	B	C	D	E
NNDH3160EL	16.5	13.0	5.9	40.0	17.0

Deck Hook Type 40

316

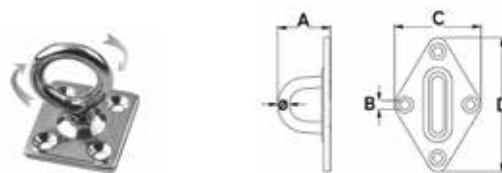


Unit mm

Item No.	A	B	C	D	E
NNDH316040	38.2	30.8	4.7	10.0	5.2

Square Pad with Swivel Eye

304



Unit mm

Item No.	A	B	C	ø	SWL	BL
NNSPSE30405	30	34	15	5	113kgs	450kgs
NNSPSE30406	34	40	18.5	6	175kgs	700kgs
NNSPSE30408	40	50	18.9	8	213kgs	850kgs

Deck Hook Type 33

316

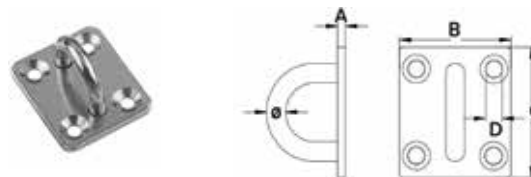


Unit mm

Item No.	A	B	C
NNDH316033	38.2	30.8	4.7

Eye Plate

304

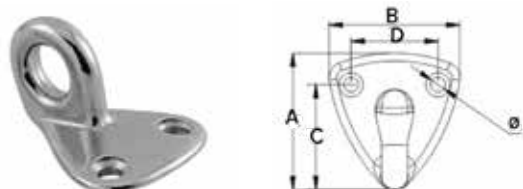


Unit mm

Item No.	A	B	C	D	ø	SWL	BL
NNSPE30406	2.5	35	40	5.2	6	250kgs	1000kgs
NNSPE30408	2.9	40	50	5.5	8	400kgs	1600kgs
NNSPE30410	3.3	47.8	60.8	5.5	10	500kgs	2000kgs

Fender Hook

316



Unit mm

Item No.	A	B	C	D	ø
NNFDH316	25.8	24.4	20	16.6	2.8

Square Pad with Eye Ring

304

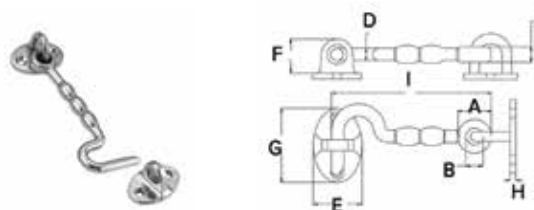


Unit mm

Item No.	A	B	C	D	E	ø	SWL	BL
NNSPER30405	4.1	2.4	30.6	35	30	5	175kgs	700kgs
NNSPER30406	5.3	2.5	40.8	40	35	6	250kgs	1000kgs
NNSPER30408	5.6	3.5	45.5	50	40	8	400kgs	1600kgs

Door Hook

304

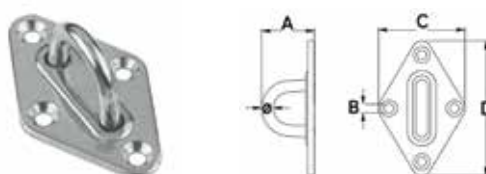


Unit mm

Item No.	A	B	C	D	E	F	G	H	I
NNDH316076	17.5	9	7.9	6.5	25.8	20.4	37.9	2.8	79.3
NNDH316100	17.5	9	7.9	6.5	25.8	20.4	37.9	2.8	103

Diamond Pad

304

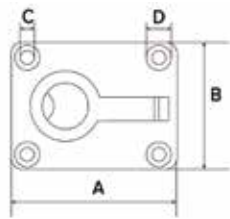


Unit mm

Item No.	A	B	C	D	ø	SWL	BL
NNDP304005	22.5	4	36.5	58.8	5	175kgs	700kgs
NNDP304008	33.0	5.5	48.8	79.9	8	400kgs	1600kgs

Flush Pull Round

316

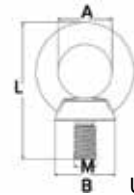


Unit mm

Item No.	A	B	C	D
NNFPR316065045	62	44.5	4.5	7.8

Eye Bolt Large Flange

316

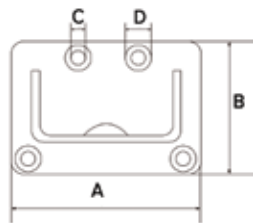


Unit mm

Item No.	A	B	L	M	SWL	BL
NNEBLF316006	15.7	18.5	41	M6	325kgs	1300kgs
NNEBLF316008	20.3	20.6	49.5	M8	550kgs	2000kgs
NNEBLF316010	25.3	26	62	M10	650kgs	2600kgs
NNEBLF316012	30	33	74	M12	975kgs	3900kgs

Flush Pull Square

316

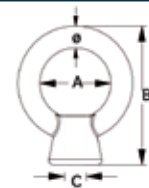


Unit mm

Item No.	A	B	C	D
NNFPS316075055	78	58	4.5	7.8

Eye Nut

316

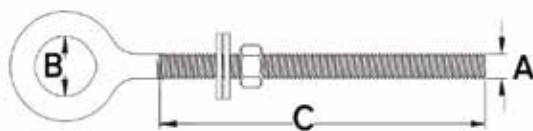


Unit mm

Item No.	A	B	C	Ø	SWL	BL
NNEN316006	16	31	M6	5	60kgs	240kgs
NNEN316008	20	38.5	M8	5.8	80kgs	320kgs
NNEN316010	25	49.0	M10	7.6	150kgs	600kgs
NNEN316012	30	60.0	M12	8.8	220kgs	880kgs

Eye Bolt with Washer and Nute

304



Unit mm

Item No.	A	B	C	SWL	BL
NNEBNW30408080	M8	17	80	450kgs	1800kgs
NNEBNW30408100	M8	17	100	600kgs	2400kgs
NNEBNW30408130	M8	17	130	450kgs	1800kgs
NNEBNW30410080	M10	21	80	600kgs	2400kgs
NNEBNW31610100	M10	21	100	875kgs	3500kgs
NNEBNW30410150	M10	21	150	600kgs	2400kgs
NNEBNW30412100	M12	25	100	875kgs	3500kgs

Grease Nipple Straight

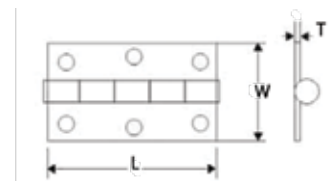
304



Item No.	Size
NNGNS304006	M6
NNGNS304008	M8

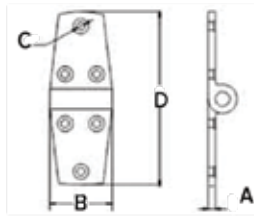
Butt Hinge

304



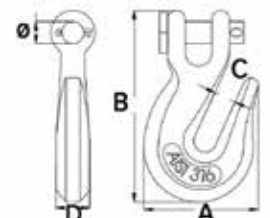
Unit mm

Item No.	Size	L	W	T	Screw
NNBH30412050038	2	50	38	1.5	6#
NNBH30415070050	3	76	48	1.5	6#

Stainless Steel Hinge
304


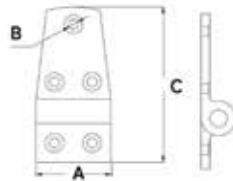
Unit mm

Item No.	A	B	C	D
NNLH304075	4	38	5.2	75.3
NNLH304104	4.2	38	5.2	103.8

Grab Hook Clevis End
316


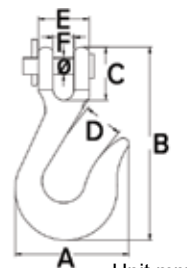
Unit mm

Item No.	A	B	C	D	Ø	SWL	BL
NNGH316078	44	78	8.8	11	9	525kgs	2100kgs

Stainless Steel Hinge
304


Unit mm

Item No.	A	B	C
NNSH304057	4	38	5.2
NNSH304071	4.2	38	5.2

Slip Hook Clevis End
316


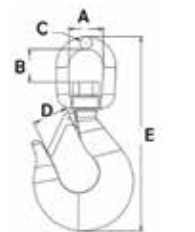
Unit mm

Item No.	A	B	C	D	E	F	Ø
NNSH316100	60.5	98.8	26	22	26	11	9
SWL: 500kgs, BL 2000kgs							

Piano Hinge
316


Unit mm

Item No.	Width Open	Width Closed	Length	Pin	T
NNPH31612180019	M32	19	1800	3.2	1.2
	Drilled				

Slip Hook Swivel End
316


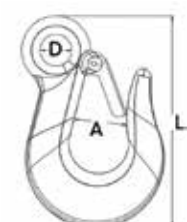
Unit mm

Item No.	A	B	C	D	E
NNSHSE316120	22	22.5	6.5	21.5	117
SWL: 425kgs, BL 1700kgs					

Key Steel
316


Unit mm

Item No.	Size
NNKS316004	4 x 4 x 305 mm
NNKS316005	5 x 5 x 305 mm
NNKS316008	8 x 8 x 305 mm
NNKS316010	10 x 10 x 305 mm
NNKS316012	12 x 12 x 305 mm

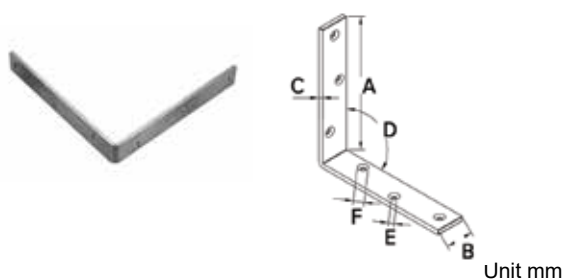
Slip Hook Eye End
316


Unit mm

Item No.	A	D	L	SWL	BL
NNSHSL316090	22	13.3	88.3	425kgs	1700kgs

L Shape Plate

304

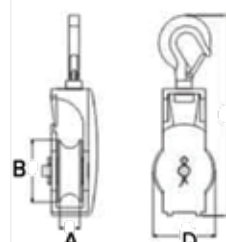


Unit mm

Item No.	A	B	C	D	E	F
NNLB304250	90L-250	30	5	90	5	10
NNLB304300	90L-300	30	5	90	5	10

Seine Block (Hook Top)

316

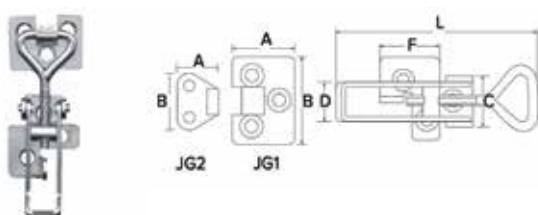


Unit mm

Item No.	A	B	C	D	SWL	BL
NNSB316075	15	75	270	75	575kgs	2300kgs

Toggle Latch

316

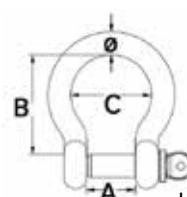


Unit mm

Item No.	Size	L	A	B	C	D	F
NNTL316078087	JG1	78-87	24	33	18	14	24
NNTL316110130	JG2	110-120	22	30	25	20	35

Bow Shackle

316

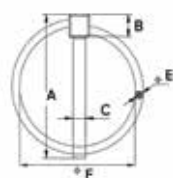


Unit mm

Item No.	ø	A	B	C	SWL	BL
NNBS316005	5	10.8	23	17	300kgs	1200kgs
NNBS316006	6	13	31	21	425kgs	1700kgs
NNBS316008	8	17.5	36.5	28	625kgs	2500kgs
NNBS316010	10	21.5	44	35.5	1075kgs	4300kgs

Linch Pin

304

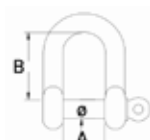


Unit mm

Item No.	A	B	C	E	F
NNLP30404	47.9	7.2	4.2	2.5	37.8
NNLP30406	55.9	7.6	6.0	3.2	40.5
NNLP30408	56.4	8.6	7.5	3.2	41.4
NNLP30410	56.8	10.7	10.6	3.2	44.0

D Shackle

316

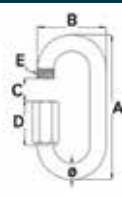


Unit mm

Item No.	ø	A	B	SWL	BL
NNDS316004	4	8.3	15	138kgs	550kgs
NNDS316005	5	11.3	17	250kgs	1000kgs
NNDS316006	6	12.3	21	425kgs	1700kgs
NNDS316008	8	17	28.6	625kgs	2500kgs
NNDS316010	10	20	35	1025kgs	4100kgs
NNDS316012	12	25	45.5	1350kgs	5400kgs

Quick Link

316

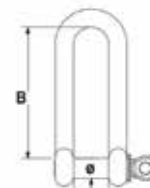


Unit mm

Item No.	ø	A	B	C	D	E
NNQL316004	4	43	18.5	7	14	M4.50x0.75
NNQL316006	6	61.5	27	9.5	21	M6.50x1.00
NNQL316008	8	77	35.5	11	25	M9.00x1.25
NNQL316010	10	89	42	13.5	28	M10.50x1.25

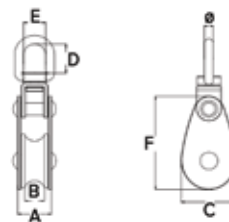
Long Shackle

316

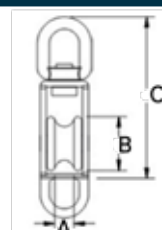


Unit mm

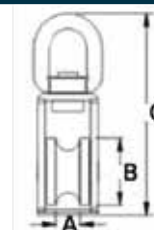
Item No.	ø	A	B	SWL	BL
NNLS316006	6	13.5	45.3	450kgs	1800kgs
NNLS316008	8	16.5	60	687kgs	2750kgs
NNLS316010	10	20.8	75.5	821kgs	3250kgs

Mame Swivel Block
316


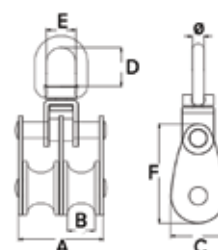
Item No.	Ø	A	B	C	D	E	F	SWL	BL
NNMSCS31609	5.0	19.2	9.5	27.3	17	13.0	49.3	375kgs	1500kgs
NNMSCS31610	5.9	19.8	10.0	35.0	19	14.5	60.3	425kgs	1700kgs
NNMSCS31610	7.8	25.0	13.0	54.0	27	19.0	85.0	700kgs	2800kgs

Mame Swivel Block with Eye
316


Item No.	A	B	C	SWL	BL
NNMSCSE31610	10.5	27.0	80	375kgs	1500kgs
NNMSCSE31612	12.0	32.0	121	425kgs	1800kgs
NNMSCSE31614	14.2	50.5	127	700kgs	3500kgs

Mame Swivel Block Fixed Body
316


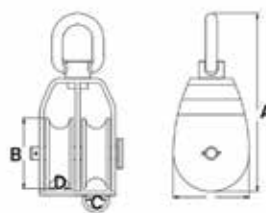
Item No.	A	B	C	SWL	BL	Pin
NNMSCSF31610	10	28	82	375kgs	1500kgs	Welded
NNMSCSF31612	12	31	95	425kgs	1800kgs	Welded
NNMSCSF31614	14	50	128	700kgs	3500kgs	Removable Plit Pin

Mame Swivel Block Double
316


Item No.	Ø	A	B	C	D	E	F	SWL	BL
NNMSDCS31610	6	38.0	10.2	35	20	15.0	60	238kgs	950kgs
NNMSDCS31615	8	51.3	15.2	54	26	20.9	85	700kgs	2800kgs

Mame Swivel Block Double with Eye

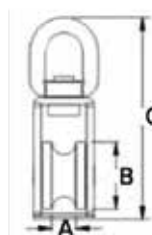
316



Item No.	A	B	C	D	E	SWL	BL
NNMSDCSE31625	81	25	11.8	14.0	30.0	500kgs	2000kgs
NNMSDCSE31632	95	32	11.8	14.0	35.6	575kgs	2300kgs
NNMSDCSE31650	129	50	15.0	15.3	54.0	850kgs	3400kgs

Mame Swivel Block (Nylon Sheave)

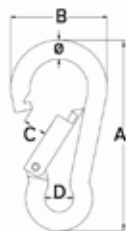
316



Item No.	A	B	C	Pin
NNMSN31610	10	25	79	Welded
NNMSN31611	11	32	95	Welded
NNMSN31615	14.8	49.7	128	Removable Plit Pin

Spring Hook

316

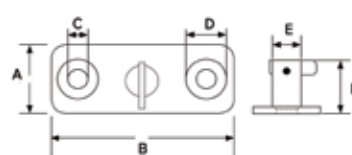


Unit mm

Item No.	Ø	A	B	C	D	SWL	BL
NNSH316005	5	50	26.5	7	8	55kgs	220kgs
NNSH316009	9	90	45	10.5	12.8	150kgs	600kgs

Stay Put

316

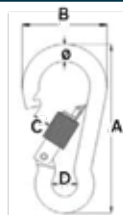


Unit mm

Item No.	A	B	C	D	E	F	Orientation
NNSPH316016	16	35	5.5	9.5	9	16	Vertical
NNSPV316016	16	35	5.5	9.5	9	16	Horizontal

Spring Hook with Nut

316



Unit mm

Item No.	Ø	A	B	C	D	SWL	BL
NNSHN31606	6	60	30	6.5	8.5	114kgs	456kgs
NNSHN31608	8	80	40.5	8.5	12	182kgs	728kgs
NNSHN31610	10	100	50	10	15	273kgs	1092kgs

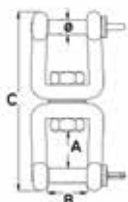
Swivel Eye Snap

316



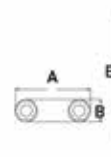
Unit mm

Item No.	A	B	C	SWL	BL
NNSPH316016	9.8	21.5	87.5	43kgs	170kgs

Swivel Jaw
316


Unit mm

Item No.	Ø	A	B	C	SWL	BL
NNSJ316006	6	12	12	64.4	300kgs	1200kgs
NNSJ316008	8	15.5	16	87	475kgs	1900kgs
NNSJ316010	10	20.5	18.5	111	875kgs	3500kgs

U Bolt
304


Unit mm

Item No.	A	B	C	D	E	M
NNUBNW304008080	50	15	40	35	80	M8
NNUBNW304010090	70	20	55	50	91	M10
NNUBNW304010130	70.6	20	55	50	130	M10
NNUBNW304012150	83	23	73.6	58.6	150	M12

All Thread
316


Item No.	Size
NNA3160600	6mm * 1 Metre
NNA3160800	8mm * 1 Metre
NNA3161000	10mm * 1 Metre
NNA3161200	12mm * 1 Metre
NNA3161600	16mm * 1 Metre
NNA3162000	20mm * 1 Metre

Spring Washer
316


Unit mm

Item No.	Size	OD	Thickness	Width
NNWS3160006	M6	11.8	1.6	2.5
NNWS3160008	M8	14.8	2.0	3.0
NNWS3160010	M10	18.1	2.2	3.5
NNWS3160012	M12	21.1	2.5	4.0
NNWS3160016	M16	27.1	3.5	5.0
NNWS3160020	M20	33.6	4.0	6.0

Vandal Proof Nut
304


Item No.	Size
NNVPN304010	M10
NNVPN304012	M12

Flat Washer
316


Unit mm

Item No.	Size	OD	Thickness
NNWF3160600	M6	12.5	1.2
NNWF3160800	M8	17	1.2
NNWF3161000	M10	21	1.2
NNWF3161200	M12	24	1.5
NNWF3161600	M16	30	1.5
NNWF3162000	M20	37	1.5

Hex Set Screw
316


Item No.	Size	Item No.	Size
NNSS31606025	M6 x 25	NNSS31610025	M10 x 25
NNSS31606030	M6 x 30	NNSS31610030	M10 x 30
NNSS31606040	M6 x 40	NNSS31610040	M10 x 40
NNSS31606050	M6 x 50	NNSS31610050	M10 x 50
NNSS31606075	M6 x 75	NNSS31610075	M10 x 75
NNSS31606100	M6 x 100	NNSS31610100	M10 x 100
NNSS31608020	M8 x 20	NNSS31612030	M12 x 30
NNSS31608025	M8 x 25	NNSS31612040	M12 x 40
NNSS31608030	M8 x 30	NNSS31612050	M12 x 50
NNSS31608040	M8 x 40	NNSS31612075	M12 x 75
NNSS31608050	M8 x 50	NNSS31612100	M12 x 100
NNSS31608075	M8 x 75	NNSS31616050	M16 x 50
NNSS31608100	M8 x 100	NNSS31616075	M16 x 75
		NNSS31616100	M16 x 100

One Way Raised Countersunk Screw 304



Item No.	Size	Item No.	Size
NNSOW3040820	8G x 3/4"	NNSOW3041020	10G x 3/4"
NNSOW3040825	8G x 1"	NNSOW3041025	10G x 1"
NNSOW3040840	8G x 1 1/2"	NNSOW3041040	10G x 1 1/2"

Counter Sunk Socket Screw

316



Item No.	Size	Length
NNSCSS31606025	M6	25mm
NNSCSS31606040	M6	40mm
NNSCSS31608025	M8	25mm
NNSCSS31608040	M8	40mm
NNSCSS31610025	M10	25mm
NNSCSS31610040	M10	40mm

Countersunk Cross Self Tapping Screw

316



Item No.	Size	Item No.	Size
NNSCS316060012	6G, 1/2"	NNSCS316120025	12G, 1"
NNSCS316060019	6G, 3/4"	NNSCS316120038	12G, 1 1/2"
NNSCS316060025	6G, 1"	NNSCS316120050	12G, 2"
NNSCS316080012	8G, 1/2"	NNSCS316140025	14G, 1"
NNSCS316080019	8G, 3/4"	NNSCS316140038	14G, 1 1/2"
NNSCS316080025	8G, 1"	NNSCS316140050	14G, 2"
NNSCS316080032	8G, 1 1/4"		
NNSCS316080038	8G, 1 1/2"		
NNSCS316100019	10G, 3/4"		
NNSCS316100025	10G, 1"		
NNSCS316100032	10G, 1 1/4"		
NNSCS316100038	10G, 1 1/2"		
NNSCS316100050	10G, 2"		

Nut

316



Nylon Insert Hex Nut



Hex Nut

Item No.	Size	Item No.	Size
NNN3160600	M6	NNX3160600	M6
NNN3160800	M8	NNX3160800	M8
NNN3161000	M10	NNX3161000	M10
NNN3161200	M12	NNX3161200	M12
NNN3161600	M16	NNX3161600	M16
NNN3162000	M20		



Dome Nut



Wing Nut

Item No.	Size	Item No.	Size
NNDN316006	M6	NNWN316006	M6
NNDN316008	M8	NNWN316008	M8
NNDN316010	M10	NNWN316010	M10
NNDN316012	M12	NNWN316012	M12
NNDN316016	M16		
NNDN316020	M20		

Pan Head Self Tapping Screw

316



Item No.	Size	Item No.	Size
NNSPH31606012	6G, 1/2"	NNSPH31612025	12G, 1"
NNSPH31606019	6G, 3/4"	NNSPH31612032	12G, 1 1/4"
NNSPH31606025	6G, 1"	NNSPH31612038	12G, 1 1/2"
NNSPH31608012	8G, 1/2"	NNSPH31612050	12G, 2"
NNSPH31608015	8G, 3/4"	NNSPH31614025	14G, 1"
NNSPH31608025	8G, 1"	NNSPH31614032	14G, 1 1/4"
NNSPH31608031	8G, 1 1/4"	NNSPH31614038	14G, 1 1/2"
NNSPH31608038	8G, 1 1/2"	NNSPH31614050	14G, 2"
NNSPH31608050	8G, 2"		
NNSPH31610025	10G, 1"		
NNSPH31610032	10G, 1 1/4"		
NNSPH31610038	10G, 1 1/2"		
NNSPH31610050	10G, 2"		

Innosoft & Innoprotect B570/B580


Remove rust with Innosoft B570, Clean Stainless Steel with Innoprotect B580

Item No.	Description
ABINNOS100	100ml
ABINNOS250	250ml
ABINNOS500	500ml

Innogel & Innoprotect


Innogel B450 is a user-friendly, green gel and is suitable for intensive cleaning of contaminated surfaces.

Item No.	Description
ABINNOG100	100ml
ABINNOG250	250ml
ABINNOG500	500ml

Molytec Diamond Cote SPRAY N CLEAN


Spray n Clean is an all purpose, ready to use, all surface cleaner that also kills bacteria

Item No.	Description
ABLPC0750	750ml

Ferro's Liquid Reflection

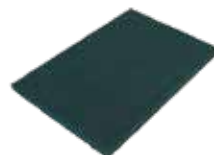

Liquid Reflection metal polish contains soft, fine alumina to gently polish and restore metal surfaces

Item No.	Description
ABPCLR0250	250ml

3M Stainless Steel Cleaner & Polish


Non-abrasive spray cleans and polishes in one easy application to restore stainless steel to its sparkling best

Item No.	Description
ABSTC0600	750ml

Cleaning Pad


Item No.	Description
ABCPFF	Fine
ABCPPG	General Purpose
ABCPPM	Medium

Polishing Back Pad


Item No.	Size
ABBPFD100016	100mm x M10
ABBPFD115022	115mm x M14
ABBPFD115022	125mm x M14

Abrasiflex Calico Mops


Item No.	Size
ABCM100050	100mm x 50 Folds
ABCM100100	100mm x 100 Folds
ABCM152100	150mm x 100 Folds

Abrasiflex Metal Cutting Wheels



Inox Iron
recommended for
cutting Stainless Steel

Item No.	Size
ABCW100016IFRE	100mm x 1mm x 16mm (Hole)
ABCW115022IFRE	115mm x 1mm x 22mm (Hole)
ABCW125022IFRE	125mm x 1mm x 22mm (Hole)

Polish Compound



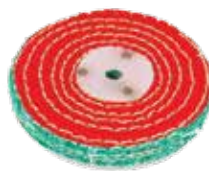
Item No.	Description
ABPCFCC	Fast Cutting
ABPCPCC	Premium Cuttings

DeerFos Resin Polish Fibre Disc



Item No.	Size
ABFD100016	100mm x 16mm (Hole), #120
ABFD115022	115mm x 22mm (Hole), #120
ABFD125022	125mm x 22mm (Hole), #120

Abrasiflex Sisal Mops



Item No.	Size
ABSM10001	100mm, 1 Section
ABSM15201	150mm, 1 Section

Abrasiflex Zirconia Flap Disc



Item No.	Size
ABFLD100016	100mm x 16mm (Hole)
ABFLD115022	115mm x 22mm (Hole)
ABFLD125022	125mm x 22mm (Hole)

Abrasiflex Stitched Rag Mops



Item No.	Size
ABSRM10001	100mm, 1 Section
ABSRM10002	150mm, 2 Sections
ABSRM15201	150mm, 1 Section

Abrasiflex Satin Finishing Machine Wheels



Item No.	Size
ABSFWCOAR	100x100x19mm, Coarse
ABSFWMED	100x100x19mm, Medium
ABSFWVFIN	100x100x19mm, Very Fine

Wet/Dry Sand Paper



Item No.	Size
ABWDS0240	240 Grit, 23 x 28 cm
ABWDS0320	320 Grit, 23 x 28 cm
ABWDS0600	600 Grit, 23 x 28 cm
ABWDS1200	1200 Grit, 23 x 28 cm

Scotch Brite Backing Pad



Item No.	Size
ABBPSP0115	115mm
ABBPSP0125	125mm

Scotch Brite Disc



Item No.	115mm	Item No.	127mm
ABSBD00115	Coarse	ABSBD00127	Coarse
ABSBDME0115	Medium	ABSBDME0127	Medium
ABSBDVF0115	Very Fine	ABSBDVF0127	Very Fine

Molytec Delayed Set Epoxy



Convenient easy to use dual syringe extra strong epoxy. 30 minutes setting time. No measuring required. Resists water, gasoline and shop solvents. Fully cures in seven hours.

Item No.	Size
ABESEA030	28.3g

Molytec Molypaste



Stainless Thread Lubricant & Anti-Gall Paste

Item No.	Size
ABMPAG065	65g
ABMPAG250	250g

Molytec Molyslip



MWF EP Metalworking Fluid

Item No.	Size
ABMWF350	350ml

Molytec 3243 Threadlock Compound



Item No.	Size
ABTLNP010	10ml
ABTLNP050	50ml

WESTERN AUSTRALIA

Cnr North Lake Road & Sobek Pass
Bibra Lake, WA, 6163
Phone: +61 8 9366 6700
Fax: +61 8 9366 6710
Email: saleswa@stirlingsaus.com.au

TASMANIA

8 Lampton Ave
Derwent Park, TAS, 7009
Phone: +61 3 6277 6100
Fax: +61 3 6277 6110
Email: salestas@stirlingsaus.com.au

QUEENSLAND

51 Musgrave Road
Coopers Plains, QLD 4108
Phone: +61 7 5631 0300
Fax: +61 7 5631 0310
Email: salesqld@stirlingsaus.com.au

NEW SOUTH WALES

Mark Rossbridge
Sales Manager
Mobile: 0422 408 485
Email: salesnsw@stirlingsaus.com.au

SOUTH AUSTRALIA, VICTORIA & NORTHERN TERRITORY

Roger Zoia
Sales Manager
Mobile: 0458 010 191
Email: salessa@stirlingsaus.com.au



Website:
Online Shop:
Facebook:

www.stirlingsaustralia.com.au
www.stirlingsshop.com
www.facebook.com/stirlingsaustralia